



Mount Avenue, W5

£530 Per week

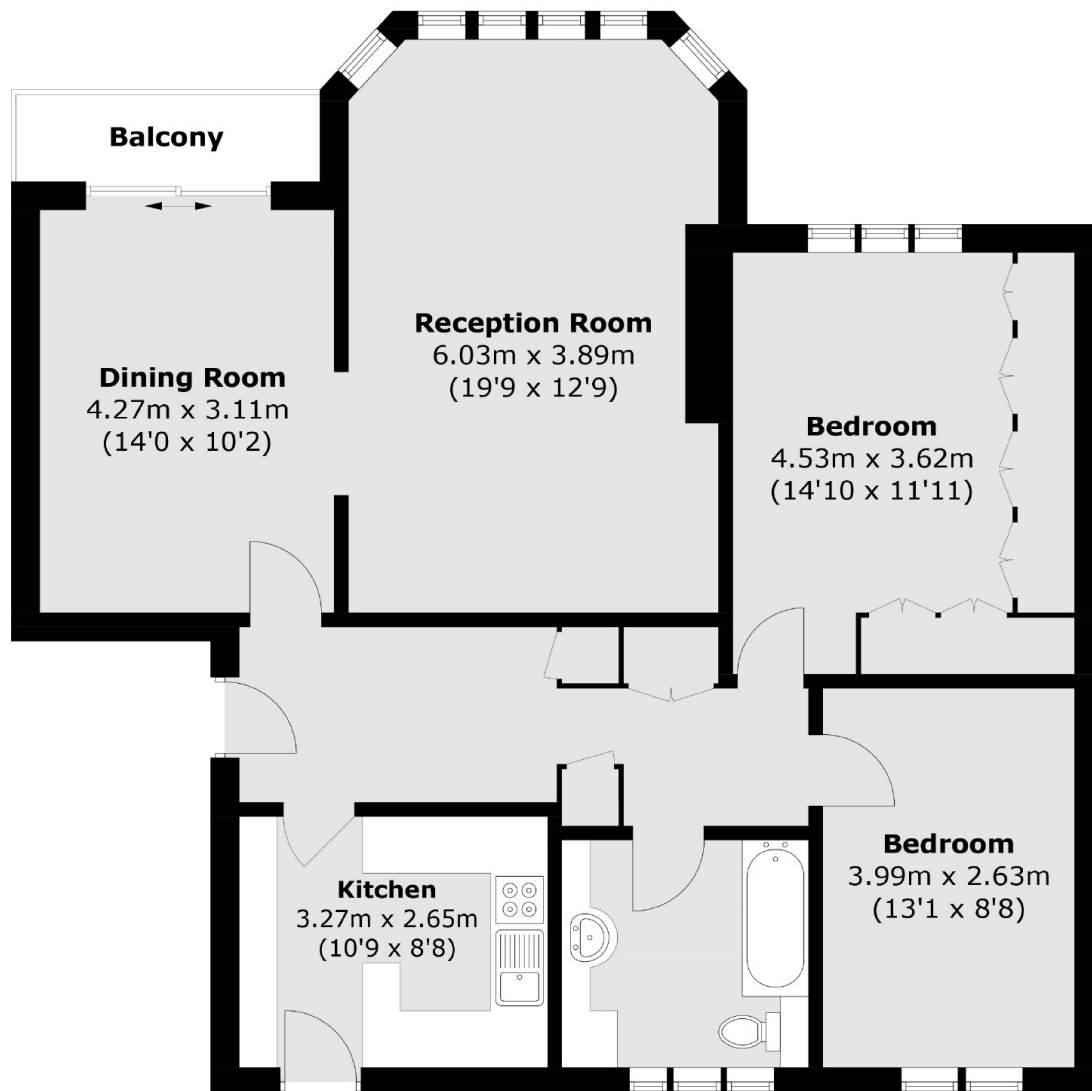
Set within this prestigious mansion block is a spacious two bedroom, top floor apartment with a private balcony, lift access and impressive communal grounds for residents use only. Ideally situated for the Montpelier School.

Mount View is situated on Mount Avenue, moments from Montpelier Primary School, just over a mile from Ealing Broadway station (Central Line, District Line, National Rail, Cross Rail).

Features

- Two Bedrooms
- One Bathroom
- Top Floor
- Communal Garden
- Private Balcony
- Lift

Mount Avenue, London, W5



Total area (approx.): 94.0 sq. m (1,011.8 sq. ft)
Balcony area (approx.): 2.9 sq. m (31 sq. ft)