



Singapore Road, W13

£350,000

An award-winning architecturally designed one bedroom, third floor apartment in the Jigsaw development offers contemporary living with a private south facing balcony and landscaped communal gardens.

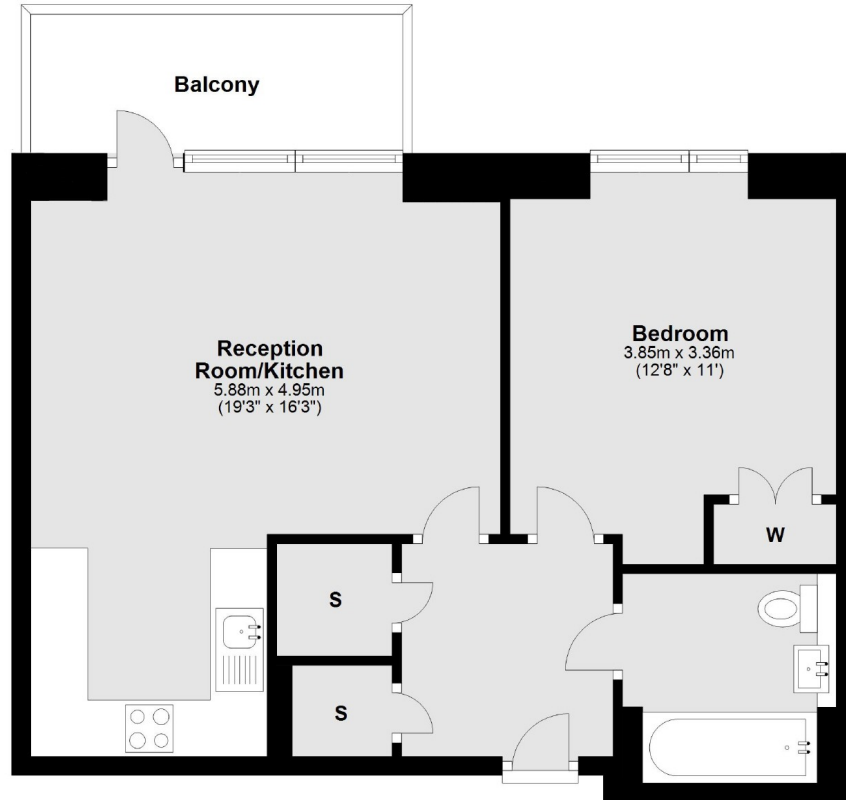
West Ealing and its Crossrail station are within half a mile of the Jigsaw development, with easy access to Broadway shops and restaurants.

Features

- One Bedroom
- Private South Facing Balcony
- Open-Plan Living
- Floor To Ceiling Windows
- Long Lease
- Lift Access
- Close To Crossrail

Singapore Road,
London, W13

Third Floor



Main area: Approx. 51.8 sq. metres (557.8 sq. feet)
Plus balconies, approx. 6.3 sq. metres (68.1 sq. feet)

Dexters

Ealing
2 New Ealing Broadway
London
W5 2NU
Sales
020 8810 0909

Energy Rating: B. We aim to make our particulars both accurate and reliable. However they are not guaranteed; nor do they form part of an offer or contract. If you require clarification on any points then please contact us, especially if you're traveling some distance to view. Please note that appliances and heating systems have not been tested and therefore no warranties can be given as to their good working order.

 **RICS** | Regulated
Estate Agent
and Letting Agent

dexters.co.uk