

Singapore Road, W13

£370,000

An award-winning architecturally designed one bedroom, third floor apartment in the Jigsaw development offers contemporary living with a private south facing balcony and landscaped communal gardens.

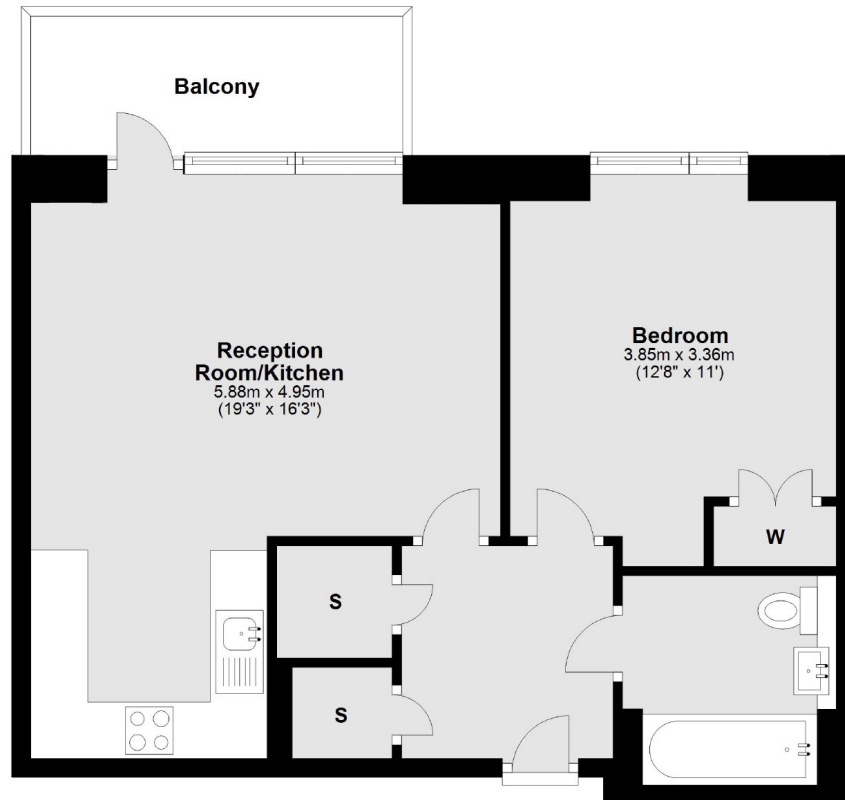
West Ealing and its Crossrail station are within half a mile of the Jigsaw development, with easy access to Broadway shops and restaurants.

Features

- One Bedroom
- Private South Facing Balcony
- Open-Plan Living
- Floor To Ceiling Windows
- Long Lease
- Lift Access
- Close To Crossrail

Singapore Road, London, W13

Third Floor



Main area: Approx. 51.8 sq. metres (557.8 sq. feet)
Plus balconies, approx. 6.3 sq. metres (68.1 sq. feet)