



Madeley Road, W5

£615,000

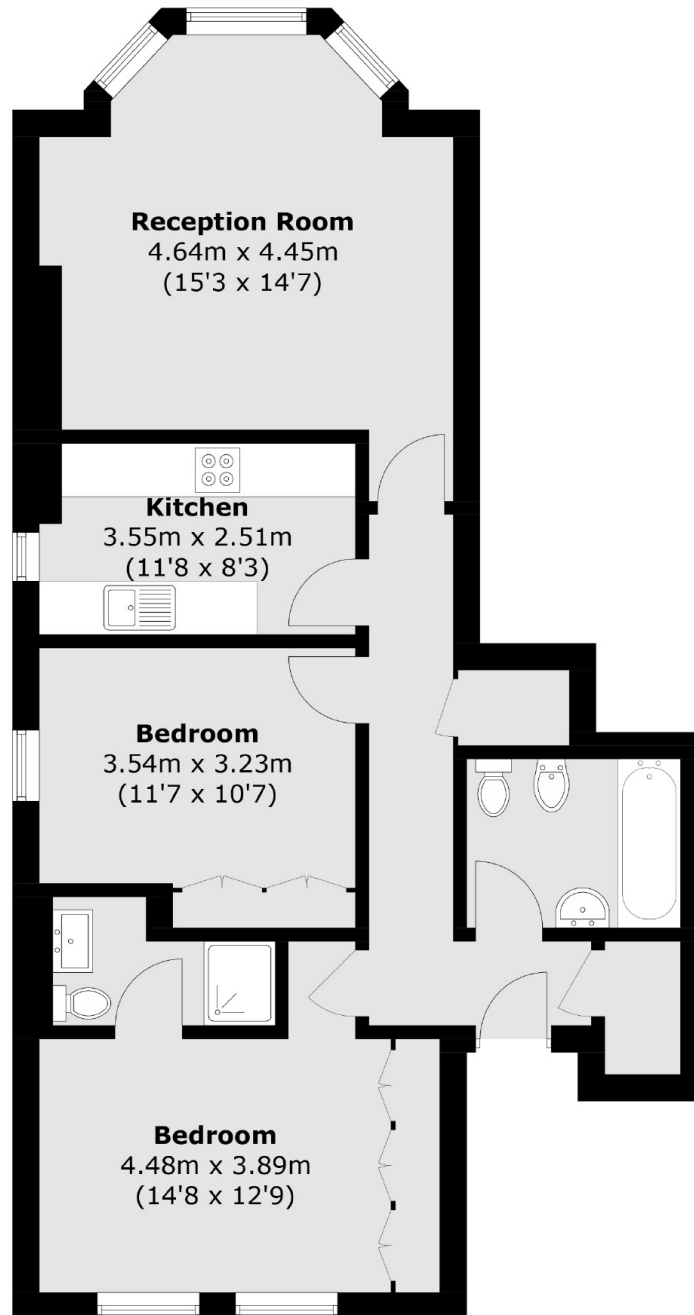
This spacious two bed two bath first floor period conversion is offered to the market with no onward chain. Being on the first floor there is high ceilings throughout and a bright and airy feel. There is residents parking to the front and a large communal garden to the rear.

Located around the corner from Ealing Broadway station with the new Elizabeth line, District and Central lines along with national rail services. All the shops, restaurants and amenities you could need are on your doorstep.

Features

- Two Bedrooms
- Two Bathrooms
- High Ceilings
- Allocated Parking
- Share Of Freehold
- No Onward Chain

Madeley Road, London, W5



Total area (approx.): 72.5 sq. m (780.4 sq. ft)