



Jubilee Road, UB6

£875,000

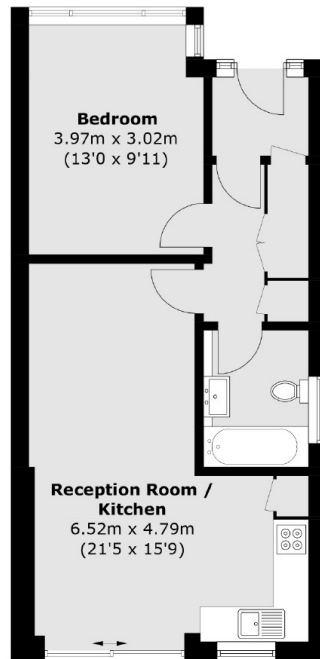
This four bedroom, three bathroom house is immaculately presented throughout and currently arranged as two flats. The house is fully extended with a large 526 sq ft brick garden room with underfloor heating and a shower, which can be used as a reception room or office. The property has been built to the highest standard with a further private garden to the rear overlooking the allotments.

Jubilee road is a quiet residential road with Perivale Station approximately a 10 minute walk away providing access to the Central Line. There is a 24 hour bus service into Ealing Broadway, which offers the new Elizabeth Line, mainline rail services and further underground lines. There is also easy access to the A40/M40 as well.

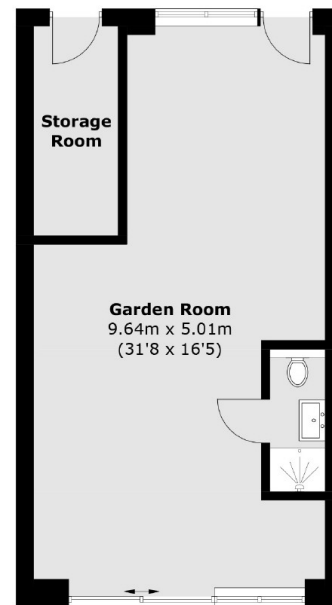
Features

- Four Bedrooms
- Three Bathrooms
- Off Street Parking
- Brick Built Annex
- End Of Terrace
- Horsenden Hill Location

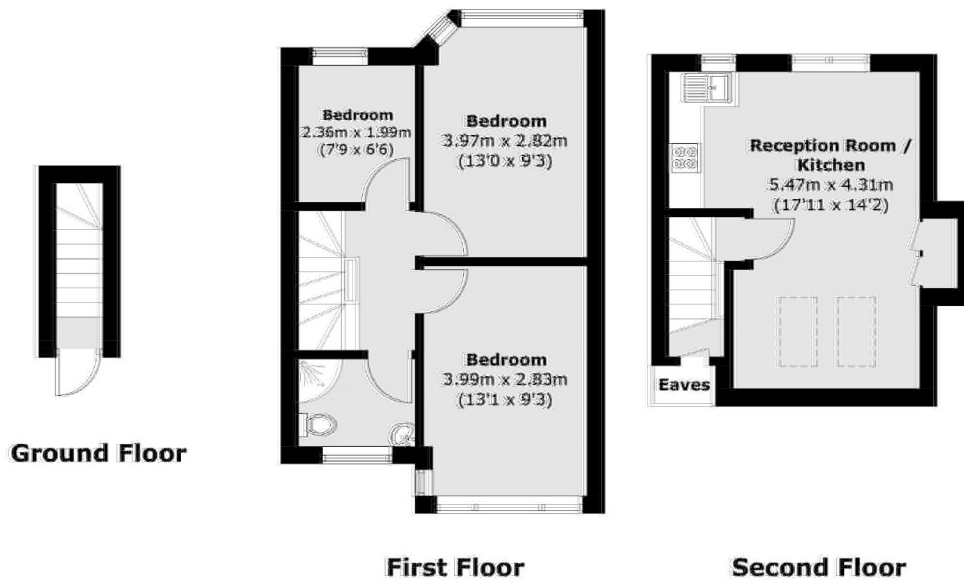
Jubilee Road, Greenford, UB6



Ground Floor Flat



**(Not Shown In Actual
Location / Orientation)**



Ground Floor

First Floor

Second Floor

Total area (approx.): 111.7 sq. m (1202.2 sq. ft)
 First Floor Flat : (approx.): 62.2 sq. m (669.4 sq. ft) (Excluding Eaves)
 Ground Floor Flat : 49.5 sq. m (532.8 sq. ft)
 Garden Room : 48.9 sq. m (526.3 sq. ft)