



## Wolverton Gardens, W5

£950,000

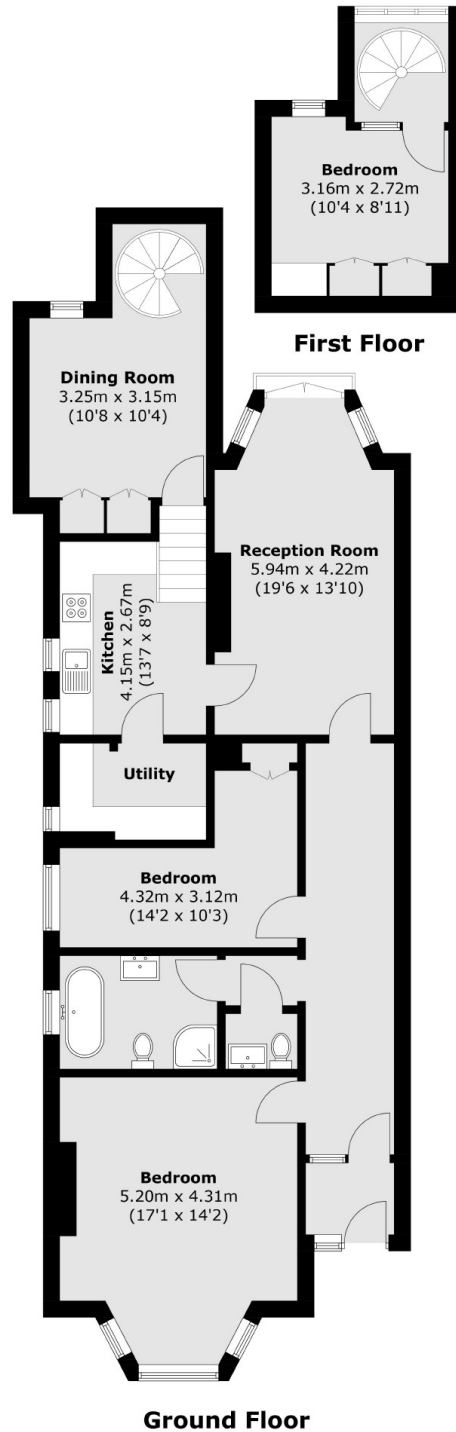
This ground floor three bedroom split level apartment occupies the entire ground floor and has been double storey extended to the rear. In excellent condition throughout there are high ceilings, a period fireplace, off street parking to the front and a large private garden to the rear.

Located just moments from Ealing Common tube with District and Piccadilly lines. Ealing Broadway with the new Elizabeth Line service is approximately 0.7 mile and the green space of Ealing Common is on your doorstep.

### Features

- Three Bedrooms
- Ground Floor
- Private Garden
- Off Street Parking
- No Onward Chain
- Share Of Freehold

# Wolverton Gardens, London, W5



Total area (approx.): 119.2 sq. m (1,283.1 sq. ft)