



## Granville Gardens, W5

£600,000

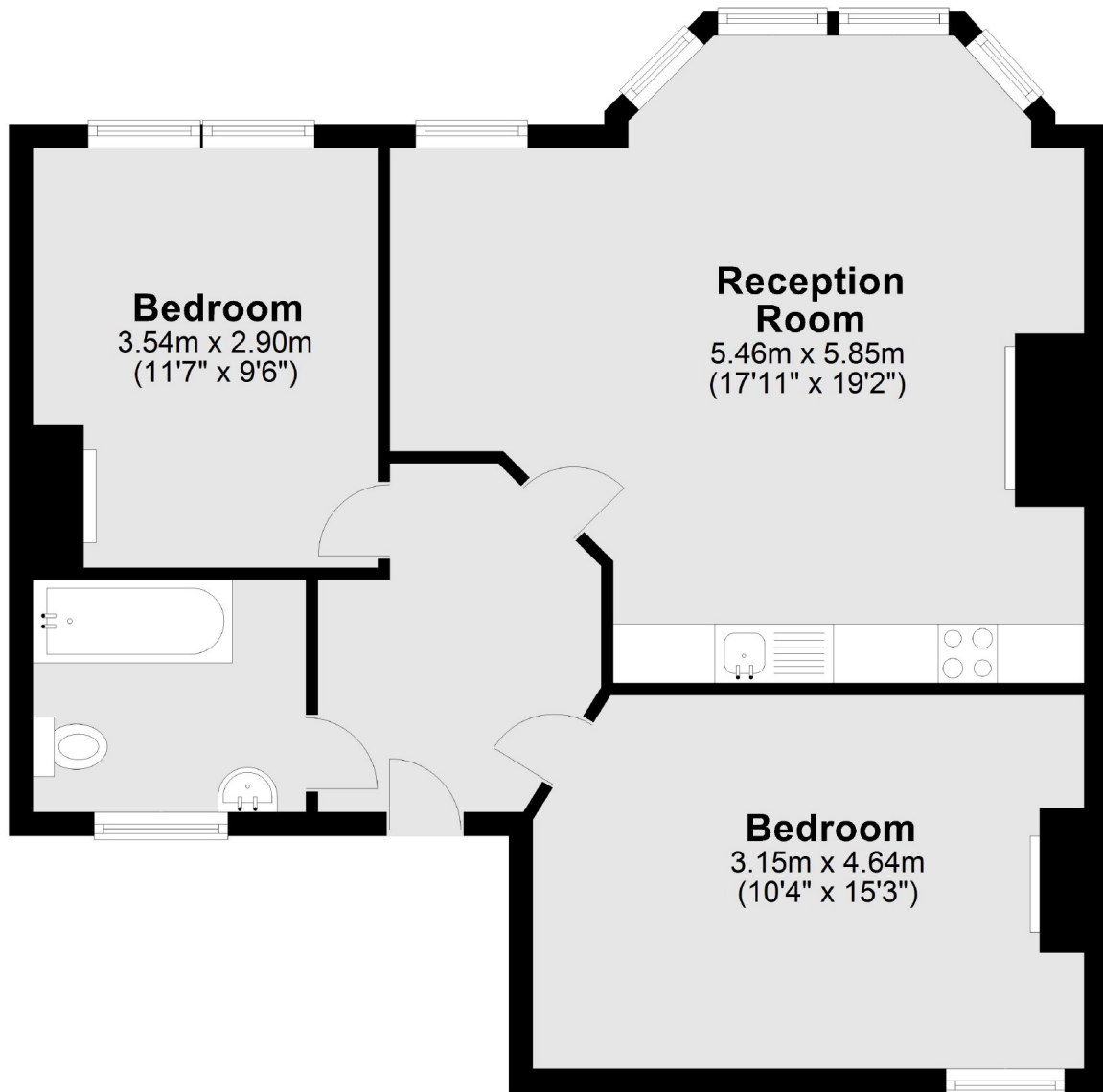
A two double bedroom first floor period conversion with a contemporary feel whilst benefitting from many period features being retained. Exposed brick, high ceilings, wooden floors and wonderful fireplaces are all in abundance. With a hive heating system, a perfect a lock up and leave with a long leasehold and no onward chain.

Located adjacent to Ealing Common tube station with District and Piccadilly lines. The busy Ealing Broadway transport hub with Elizabeth and Central lines is less than a mile away. There are a wide range of shops and amenities on your doorstep.

### Features

- Two Double Bedrooms
- Long Leasehold
- First Floor
- No Onward Chain
- Period Features
- Communal Patio

# Granville Gardens, London, W5



Total area: approx. 62.3 sq. metres (670.8 sq. feet)