



Queens Parade, W5

£399,999

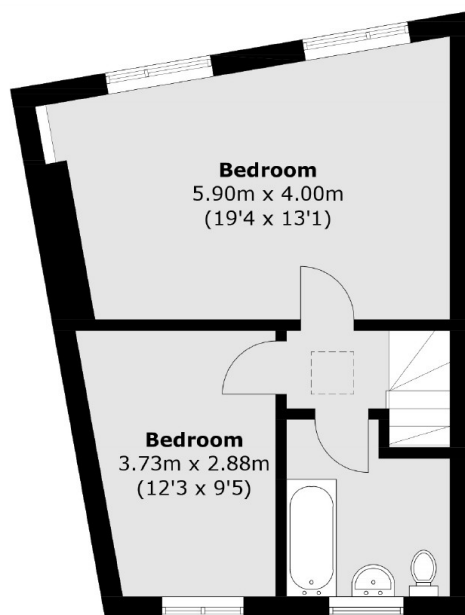
In immaculate condition throughout, this split level purpose built apartment is located on the first floor with a private patio area to the front. On the lower level there is a spacious living room, separate kitchen and WC. On the upper level there are two double bedrooms and bathroom.

Conveniently located between multiple tube stations and lines with North Ealing, Ealing Broadway, Ealing Common and West Acton with Elizabeth, Central, District and Piccadilly Lines.

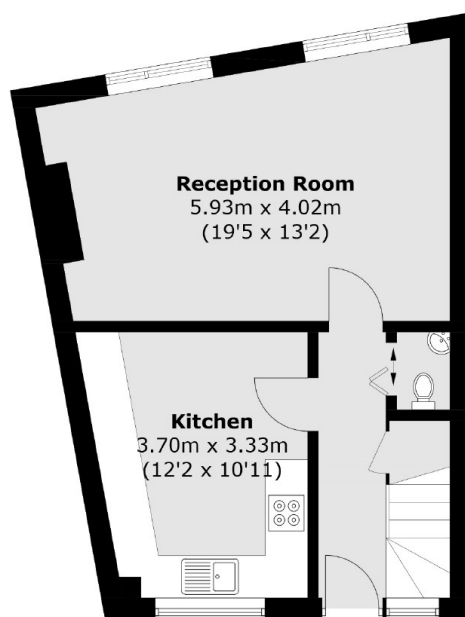
Features

- Split Level
- Two Double Bedrooms
- Close To Transport
- Ad-Hoc Service Charge
- Long Lease
- Private Terrace

Queens Parade, London, W5



Second Floor



First Floor

Total area (approx.): 77.9 sq. m (838.5 sq. ft)