



Mulgrave Road, W5

£1,200,000

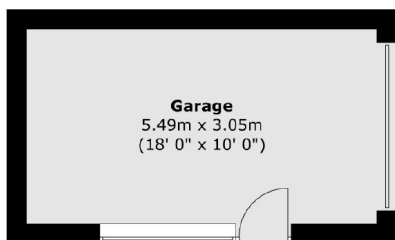
This four/five bedroom and two bathroom end of terrace family home occupies an enviable plot with vehicular side access and a detached garage at the bottom of the West facing garden. There is further potential to extend on the ground floor, subject to relevant consents.

Mulgrave Road is a popular residential street and is located close to well regarded local schools. Central line and Piccadilly line tubes are half a mile and just under a mile respectively, along with Ealing Broadway and the Elizabeth line.

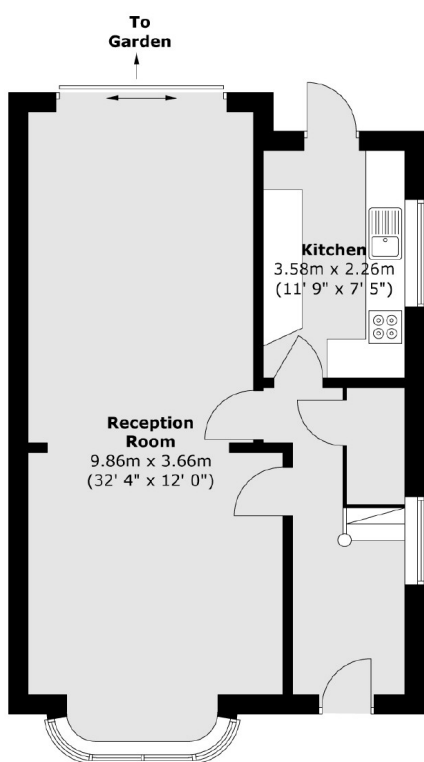
Features

Four/Five Bedrooms
Two Bathrooms
Off Street Parking
Detached Garage
Extension Potential
No Onward Chain

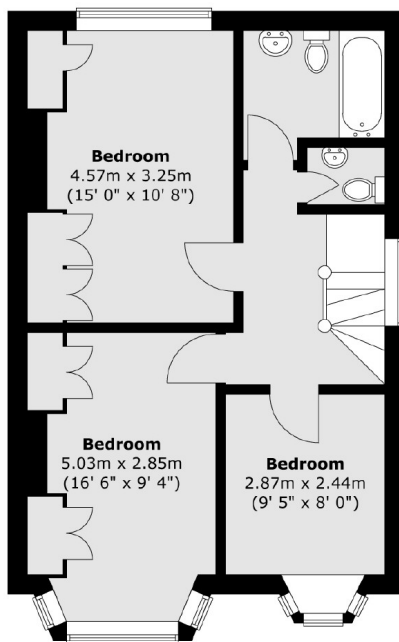
Mulgrave Road, London, W5



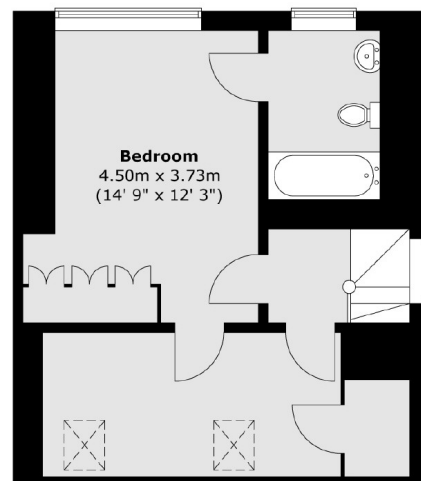
Ground Floor



First Floor



Second Floor



Total area (approx.) : 142.3 sq. m (1532 sq. ft)
Total garage area (approx.) : 16.9 sq. m (182 sq. ft)