



## Uxbridge Road, W13

£507 Per week

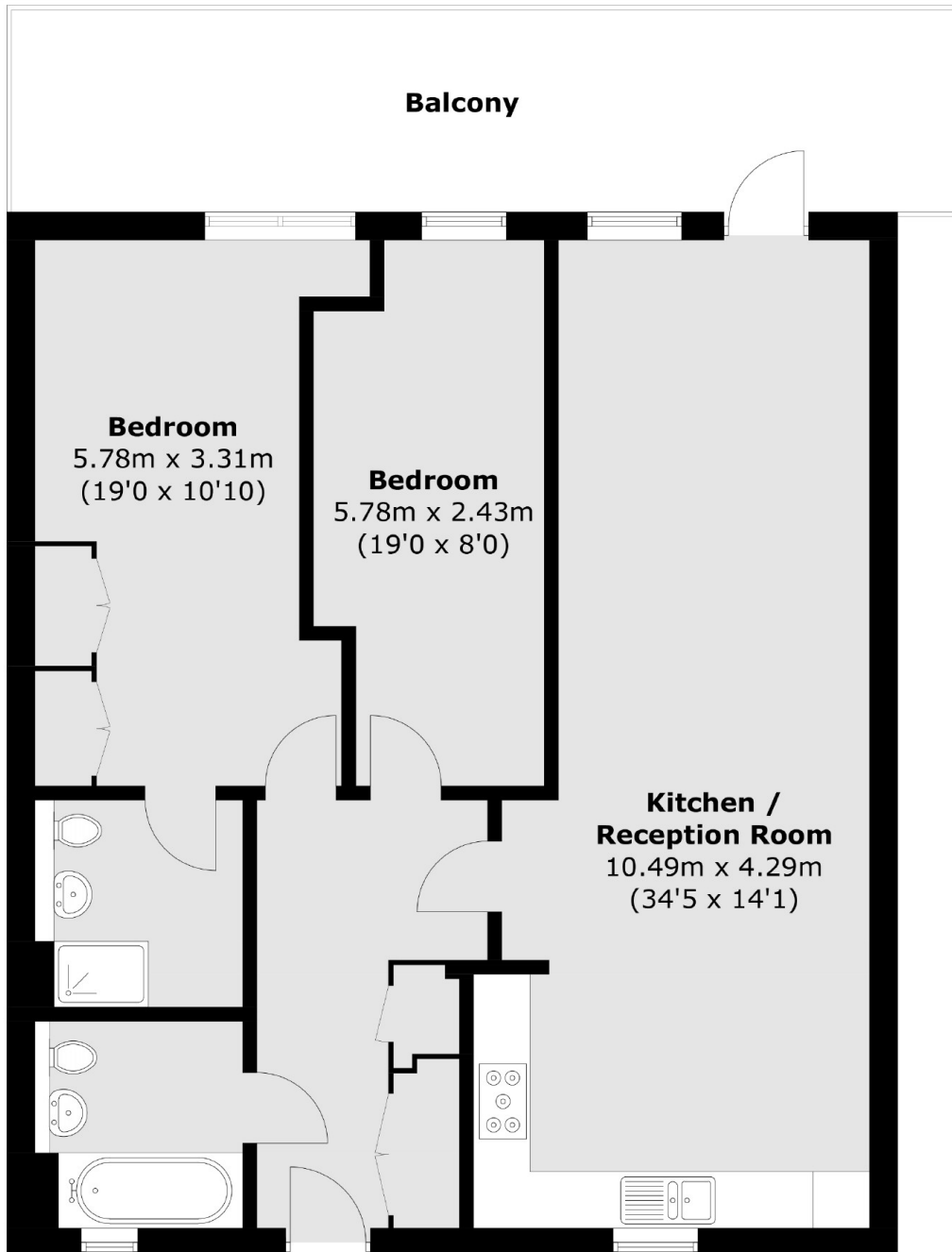
A two double bedroom penthouse apartment with two bathrooms, private balcony, secure allocated parking space and communal courtyard.

Lovlace House is just over half a mile from Ealing Broadway station and moments from West Ealing station with trains to Paddington and Heathrow.

### Features

- Two Double Bedrooms
- Two Bathrooms
- Open Plan Kitchen
- Allocated Parking
- Top Floor
- Private Roof Terrace

Uxbridge Road,  
London, W13



Total area (approx.): 93.1 sq. m (1002.1 sq. ft)  
Balcony: 21.6 sq. m (232.5 sq. ft)

**Dexters**

Ealing  
2 New Ealing Broadway  
London  
W5 2NU  
Lettings  
020 8810 1919

Energy Rating: C. We aim to make our particulars both accurate and reliable. However they are not guaranteed; nor do they form part of an offer or contract. If you require clarification on any points then please contact us, especially if you're traveling some distance to view. Please note that appliances and heating systems have not been tested and therefore no warranties can be given as to their good working order.

 **RICS** | Regulated  
Estate Agent  
and Letting Agent

dexters.co.uk