



Alexandria Road, W13

£695,000

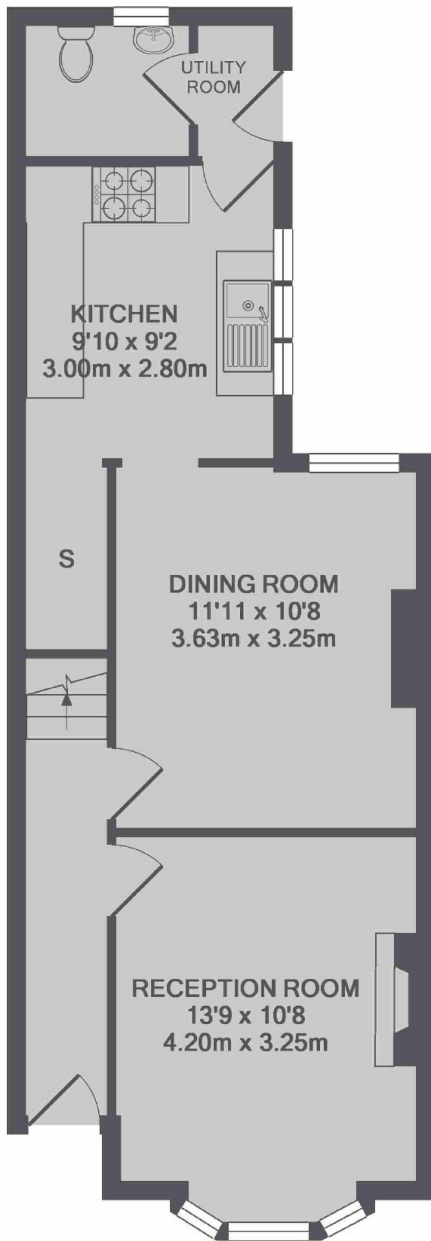
A mid-terrace Victorian family home in the heart of West Ealing. This spacious property has two large reception rooms and a modern kitchen with the potential to extend into the loft (STPP).

Located next to the Waitrose Superstore and the upcoming West Ealing Crossrail station. Perfectly located for families with Drayton Manor School and St Johns Primary.

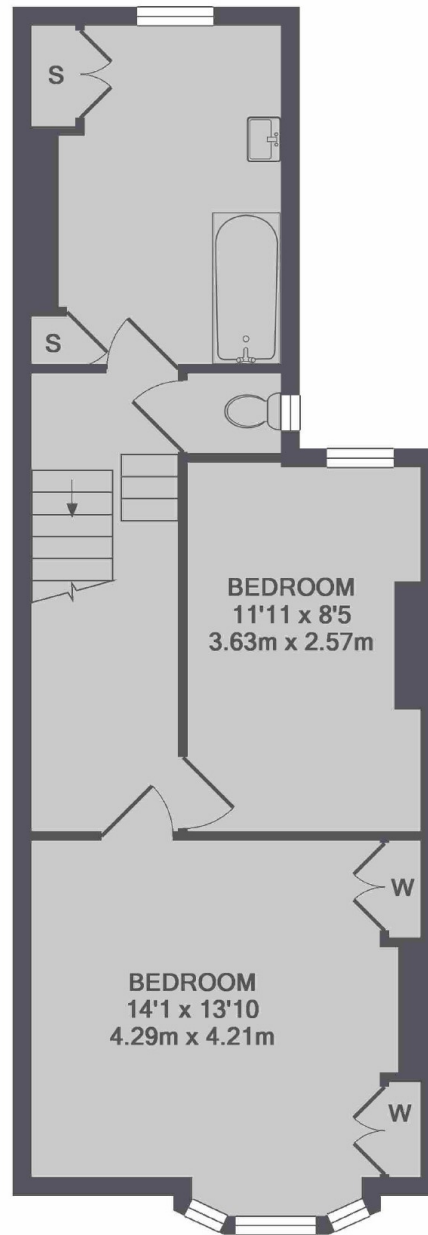
Features

- Mid-Terrace
- Two Double Bedrooms
- Two Receptions
- Utility Room
- Large Bathroom
- Private Garden

Alexandria Road, London, W13



GROUND FLOOR
APPROX. FLOOR
AREA 497 SQ.FT.
(46.1 SQ.M.)



1ST FLOOR
APPROX. FLOOR
AREA 503 SQ.FT.
(46.7 SQ.M.)

TOTAL APPROX. FLOOR AREA 999 SQ.FT. (92.9 SQ.M.)