



Windsor Road, W5

£275,000

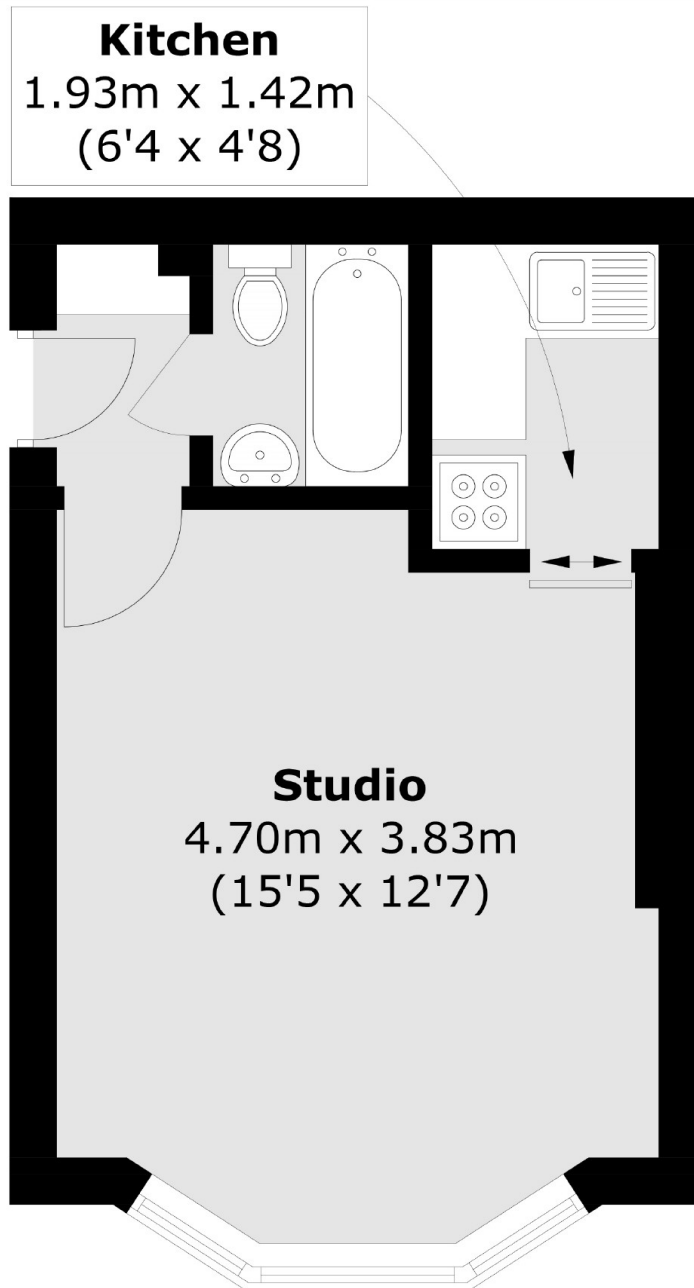
This raised ground floor studio flat is located in the heart of Ealing Broadway with no onward chain. A large bay window, East facing, to the front provides an abundance of natural light and the property would benefit from modernisation.

Exiting the property you are approximately five minutes from the busy Ealing Broadway station with its wide range of transport links, including the Elizabeth line, Central and District line tubes. Ealing Broadway shopping centre is just a two minute walk away.

Features

- Studio Flat
- Raised Ground Floors
- Updating Required
- High ceilings
- No Onward Chain
- Close To Transport

**Windsor Road,
London, W5**



Total area (approx.): 23.8 sq. m (256.2 sq. ft)