



Gunnersbury Avenue, W5

£325,000

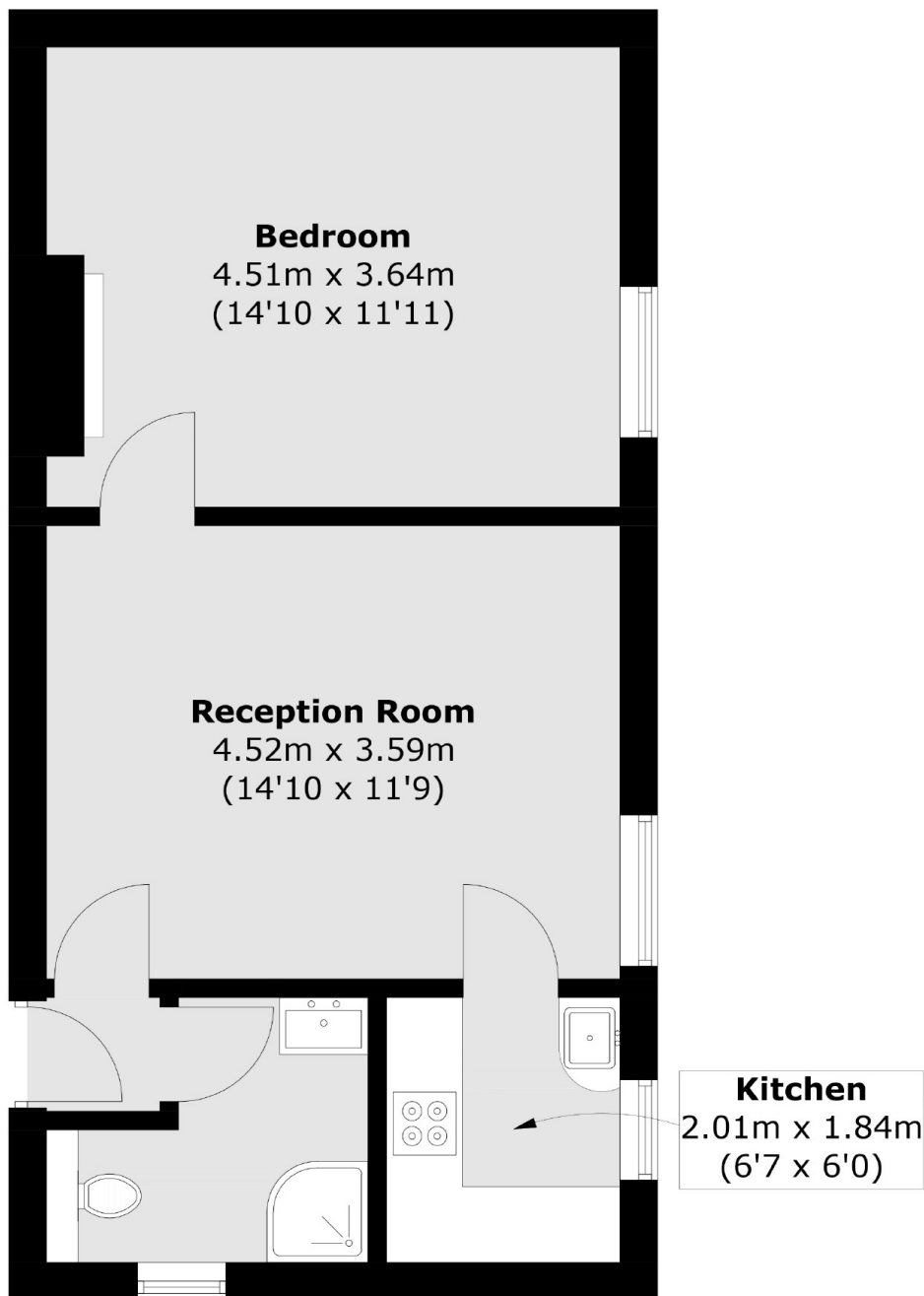
This first floor period conversion apartment is offered to the market with no onward chain. Presented in good condition throughout there is residents parking to the front and communal garden to the rear. The property will be sold with a new long underlying lease.

With the green space of Ealing Common directly opposite, the property is ideally located for easy access to both District and Piccadilly lines. The shops and amenities of Ealing Broadway, along with the new Elizabeth Line are just over half a mile away.

Features

- One Bedroom
- First Floor
- No Onward Chain
- Residents Parking
- Communal Garden
- New Long Lease

Gunnersbury Avenue, London, W5



Total area (approx.): 44.0 sq. m (473.6 sq. ft)