



## Kingsley Avenue, W13

£995,000

A natural four bedroom, two bathroom, semi-detached house with potential to further extend (STPP). The property also has two reception rooms, separate kitchen and a large west-facing garden.

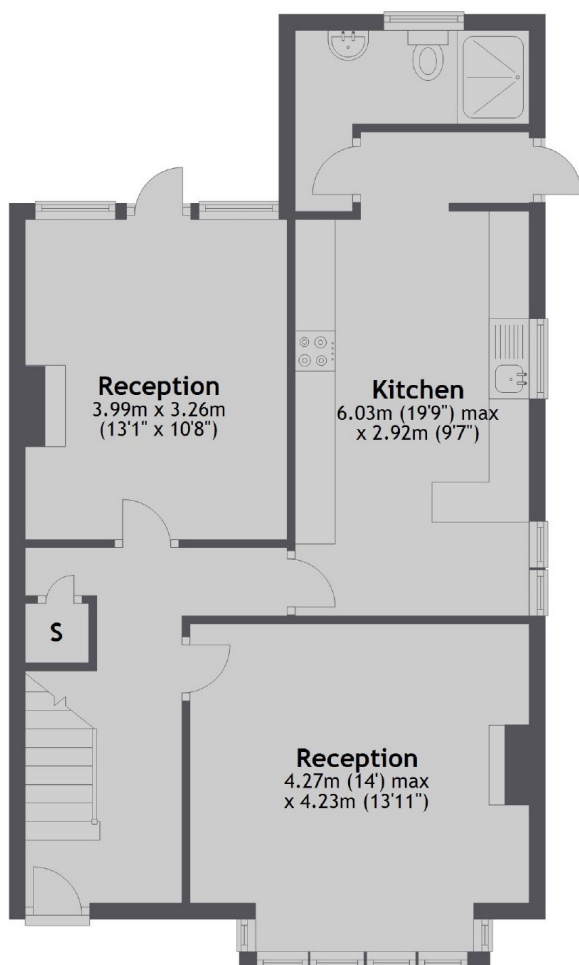
Located parallel to Argyle Road on a tree-lined residential street with quick access to West Ealing Crossrail station and Cleveland Park.

### Features

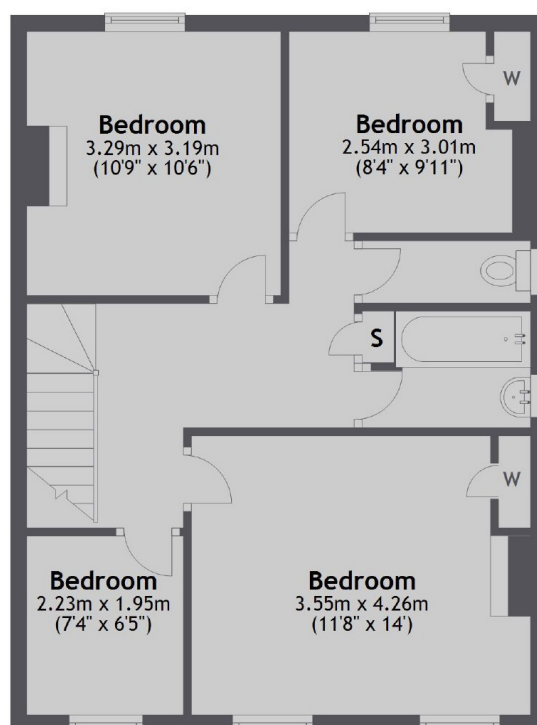
- Four Bedrooms
- Potential To Extend
- Two Receptions
- Two Bathrooms
- Period Features
- West Facing Garden

# Kingsley Avenue, London, W13

Ground Floor



First Floor



Total area: approx. 115.5 sq. metres (1243.5 sq. feet)