



Eccleston Road, W13

£950,000

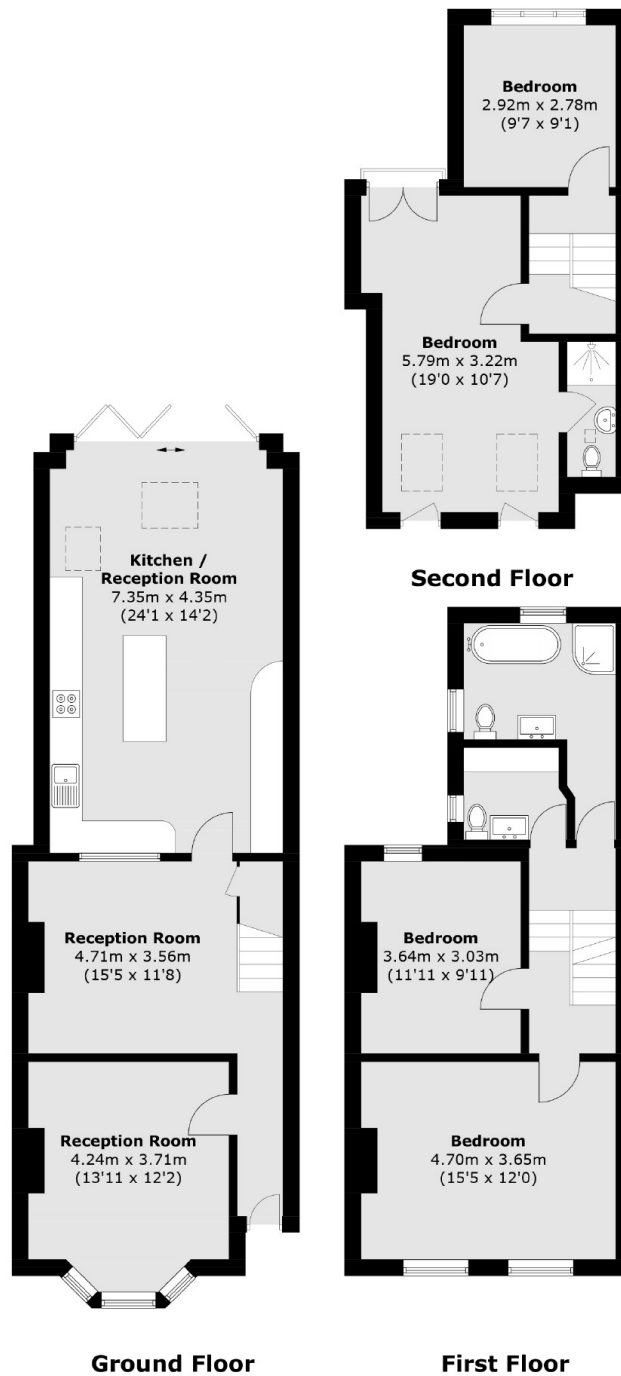
A fine example of a modernised, ground floor extended and loft converted four bedroom and two bathroom mid-terraced Victorian home. There is off street parking to the front and a sunny West facing garden to the rear. Immaculate condition throughout this property is ready to move into as your next family home.

Eccleston Road is approximately a ten minute walk from the new Elizabeth Line at West Ealing station, along with the Waitrose superstore. There is a wide range of shops and amenities nearby on the Uxbridge Road.

Features

- Four Bedrooms
- Two Bathrooms
- Two Receptions
- Off Street parking
- West Facing Garden
- Recently Renovated

Eccleston Road, London, W13



Total area (approx.): 149.1 sq. m (1,604.9 sq. ft)