



Sutherland Avenue, W13

£450,000

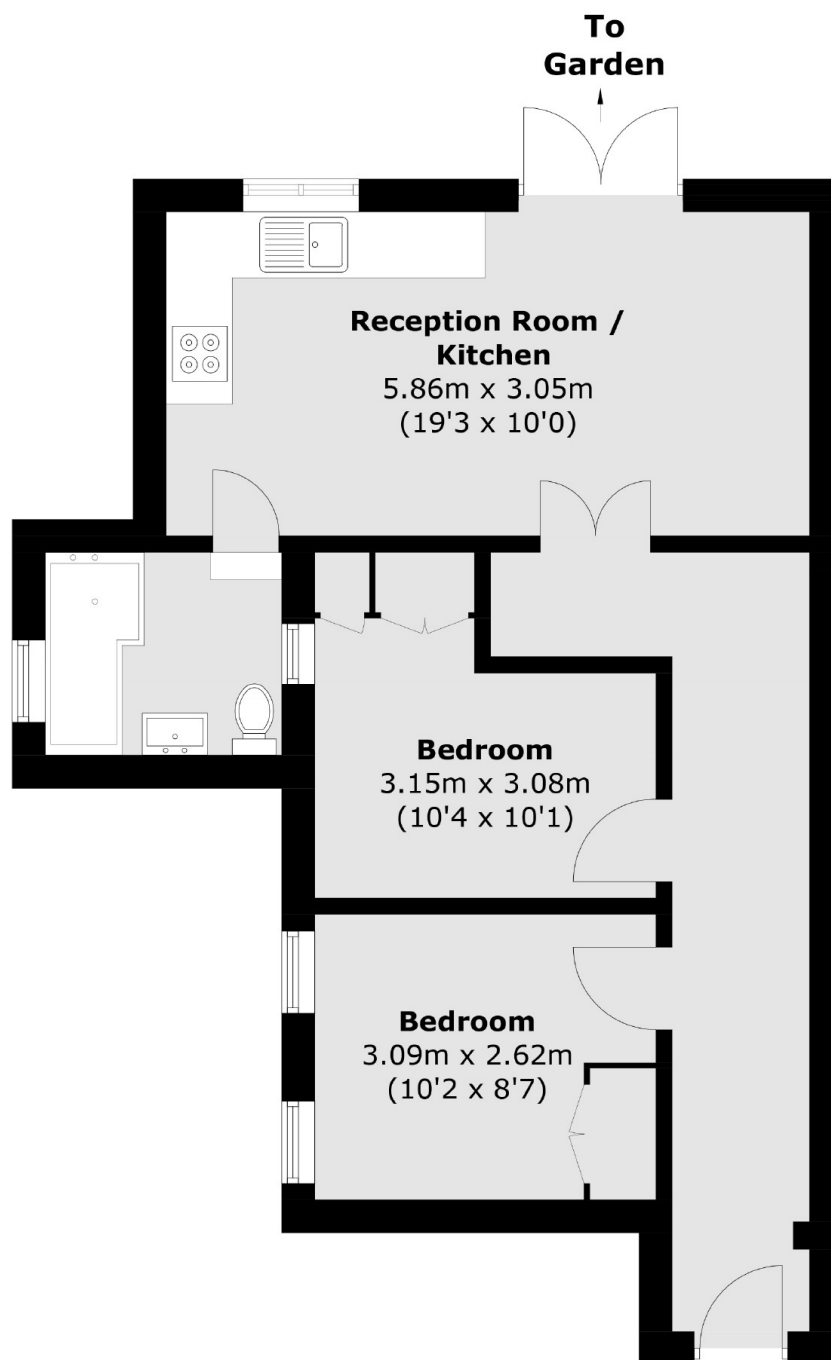
This two bedroom ground floor period conversion has been newly modernised throughout. There are two double bedrooms and an open-plan kitchen/reception to the rear, leading onto a newly landscaped garden. There is a share of freehold and allocated parking.

Sutherland Avenue is less than half a mile from West Ealing Station and only moments from a wide variety of shops on the Avenue and West Ealing. The amenities of Ealing Broadway are also within a mile.

Features

- Two Bedrooms
- Garden Flat
- Newly Renovated
- No Onward Chain
- Close To Station
- Long Lease

Sutherland Avenue, London, W13



Total area (approx.): 51.0 sq. m (549.0 sq. ft)