



Inglis Road, W5

£725,000

A two double bedroom period conversion with private garden. Located at the rear of the building, the property has a spacious living area, opening up onto the garden, with a separate kitchen. There is an additional basement level that has been converted to give a home office, or other use.

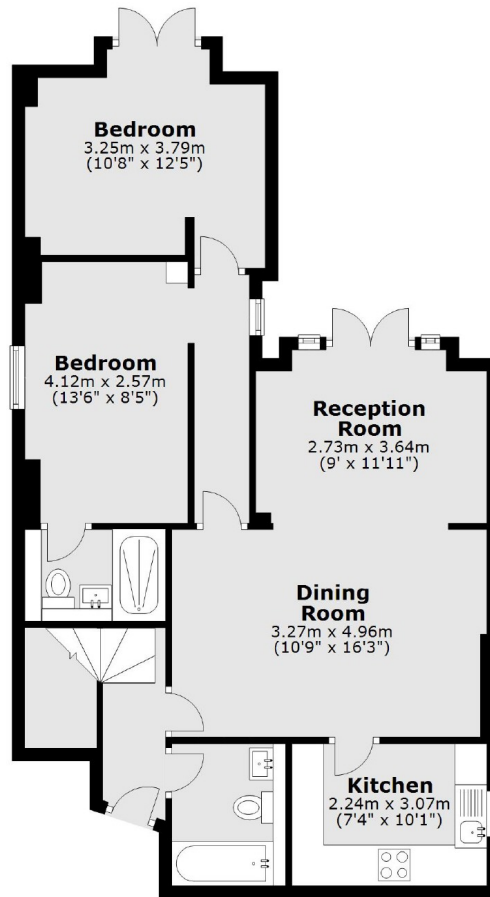
Situated just moments from the green space of Ealing Common with District and Piccadilly lines. Ealing Broadway is under a mile with Crossrail soon to be operational, and the Central Line.

Features

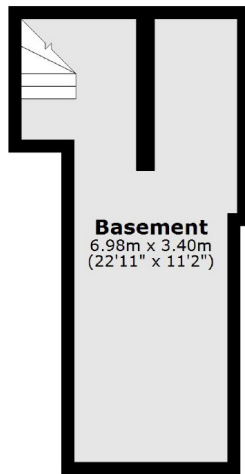
- Two Double Bedrooms
- Additional Office Room
- Private Garden
- Period Conversion
- Share Of Freehold
- Close To Transport

Inglis Road,
London, W5

Ground Floor



Lower Ground Floor



Total area: approx. 92.3 sq. metres (993.6 sq. feet)