



Priory Gardens, W5

£575,000

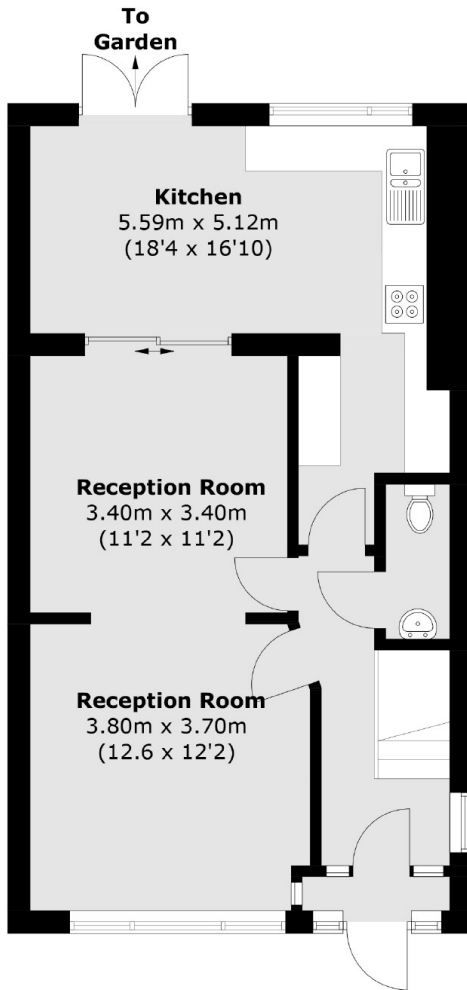
Perfect for a family home, this 1930s end of terrace house has three bedrooms, a double reception, a large kitchen diner, downstairs WC, double garage, off street parking and is being sold chain free.

This property is conveniently located for Hanger Lane tube station (Central Line) and Alperton tube station (Piccadilly Line). Close by is the large superstore Sainsburys. Wembley Central is approx 1.5 miles away and Ealing Broadway is approx 2 miles away.

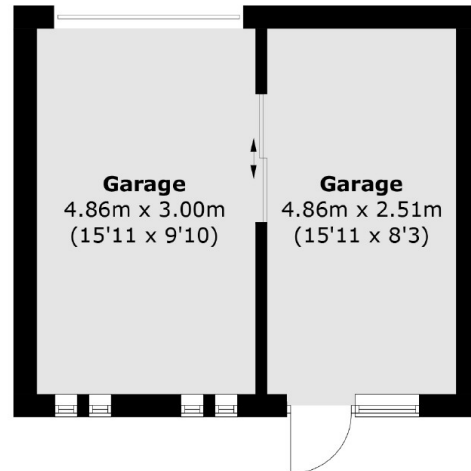
Features

- Three Bedrooms
- Freehold House
- Off Street Parking
- Double Garage
- Close to Transport
- Chain Free

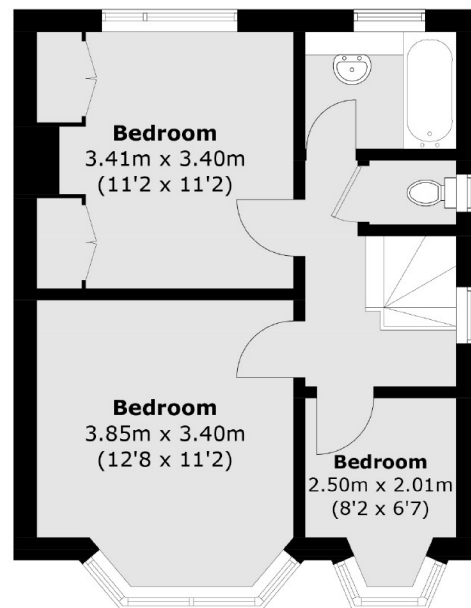
Priory Gardens, London, W5



Ground Floor



(Not Shown In Actual
Location / Orientation)



First Floor

Total area (approx.): 97.2 sq. m (1,046.3 sq. ft)
Outbuilding : 27.0 sq. m (290.6 sq. ft)