



Argyle Road, W13

£525,000

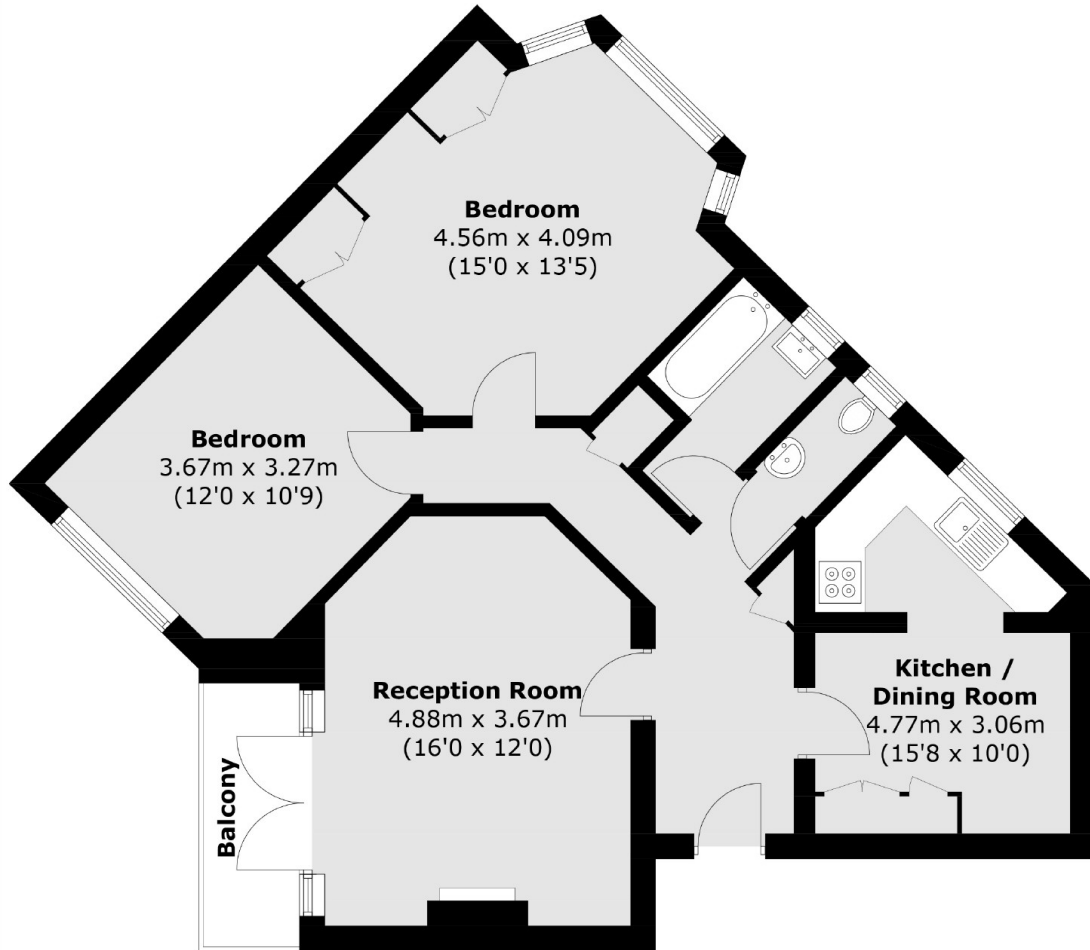
A first floor two double bedroom apartment with separate eat-in kitchen. There is a spacious living room with private balcony overlooking mature and well maintained communal gardens to the rear. Occupying a corner plot, the property is bright and spacious throughout. New double glazing windows have been fitted throughout, all apart from the balcony doors.

Located opposite Cleveland Park and half a mile to the new West Ealing Crossrail, Elizabeth line station. Pitshanger Lane shops and restaurants are within half a mile.

Features

- Two Double Bedrooms
- First Floor
- Recently Modernised
- Communal Gardens
- Long Lease
- Private Balcony

Argyle Road, London, W13



First Floor

Total area (approx.): 76.4 sq. m (822.4 sq. ft)
Balcony area (approx.): 3.6 sq. m (38.7 sq. ft)