



## Claremont Road, W13

£925,000

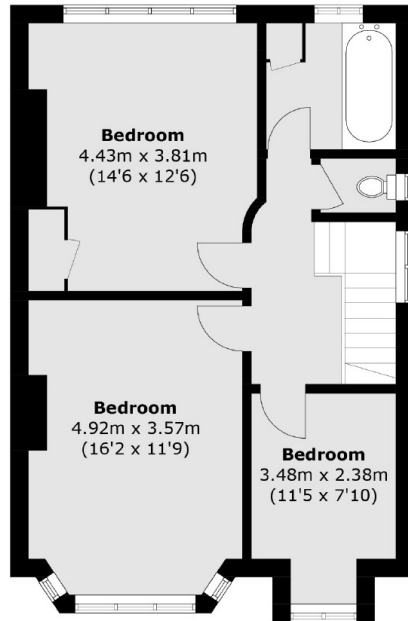
This 1930s semi-detached house in one of Ealing's quiet residential roads has three bedrooms, two receptions, a family kitchen, a large garden, a garage and the potential to extend (STPP).

This property is located 0.8 miles from Pitshanger Lane where there are many shops, restaurants and convenience stores. Ealing Broadway is also just over 1 mile away. Transport links include West Ealing station (Elizabeth Line & Main Line rail) and Castlebar Park. Bus Routes include E7, E2, E9, 297, E10.

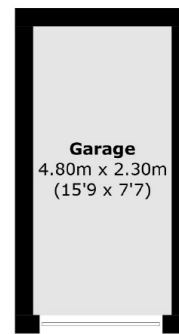
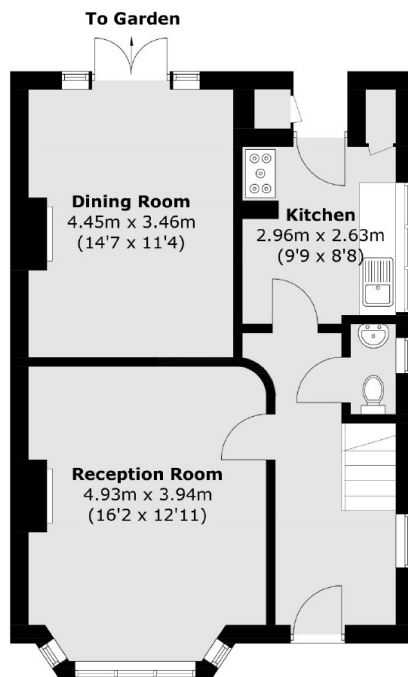
### Features

Three Bedrooms  
Potential to Extend  
Large Garden  
Semi Detached  
Period Features  
Garage

# Claremont Road, London, W13



**First Floor**



**(Not Shown In Actual  
Location / Orientation)**

**Ground Floor**

Total area (approx.): 110.9 sq. m (1,193.7 sq. ft)  
External Storage (approx.): 0.4 sq. m (4.3 sq. ft)  
Garage (approx.): 11.0 sq. m (118.4 sq. ft)