



Eaton Rise, W5

£800,000

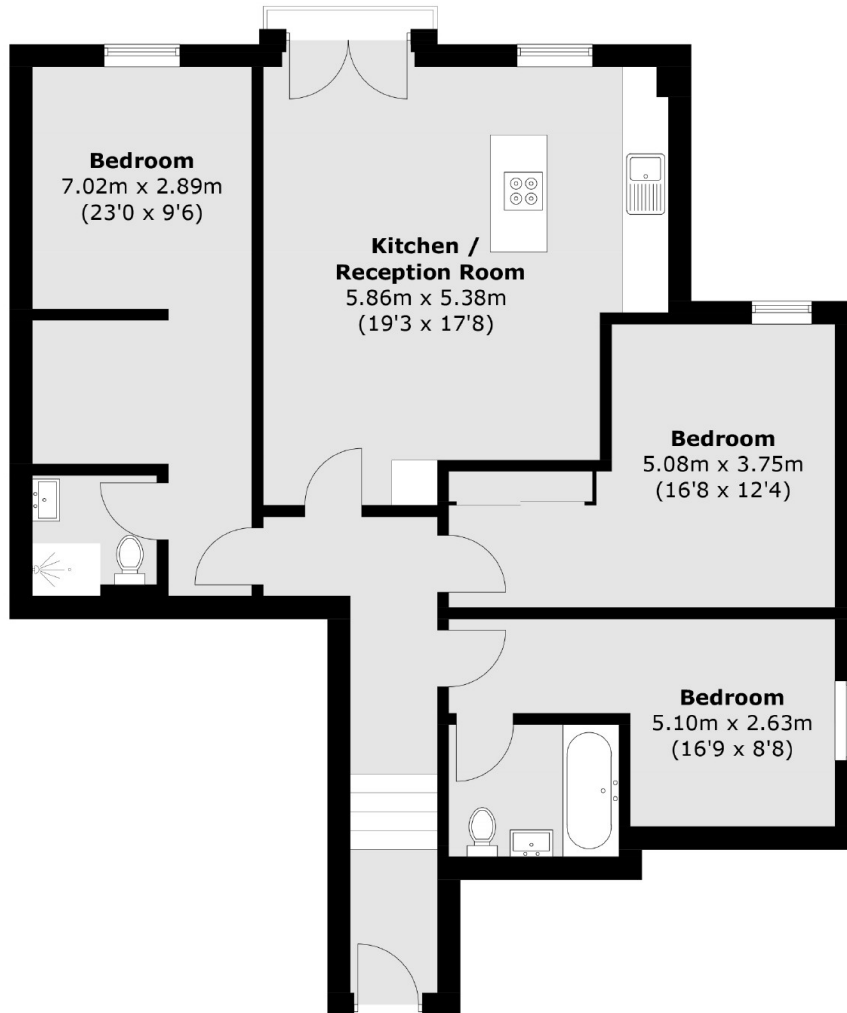
This immaculately presented three bedroom, two bathroom apartment situated in one of Ealing's finest developments. On the first floor there is an en-suite bathroom and dressing room to the principal bedroom, open plan kitchen/living area, a residents gym, communal gardens and allocated parking.

This property is located on Eaton Rise along many popular bus routes. Other transport links include Ealing Broadway station (Central Line, District Line, Mainline Rail and The Elizabeth Line). Montpelier Primary School is also a short walk away.

Features

- Three Bedrooms
- Two Bathrooms
- Allocated Parking
- Communal Garden
- Communal Gym
- Long Lease

Eaton Rise, London, W5



Total area (approx.): 90.5 sq. m (974.1 sq. ft)