



Eaton Rise, W5

£824,500

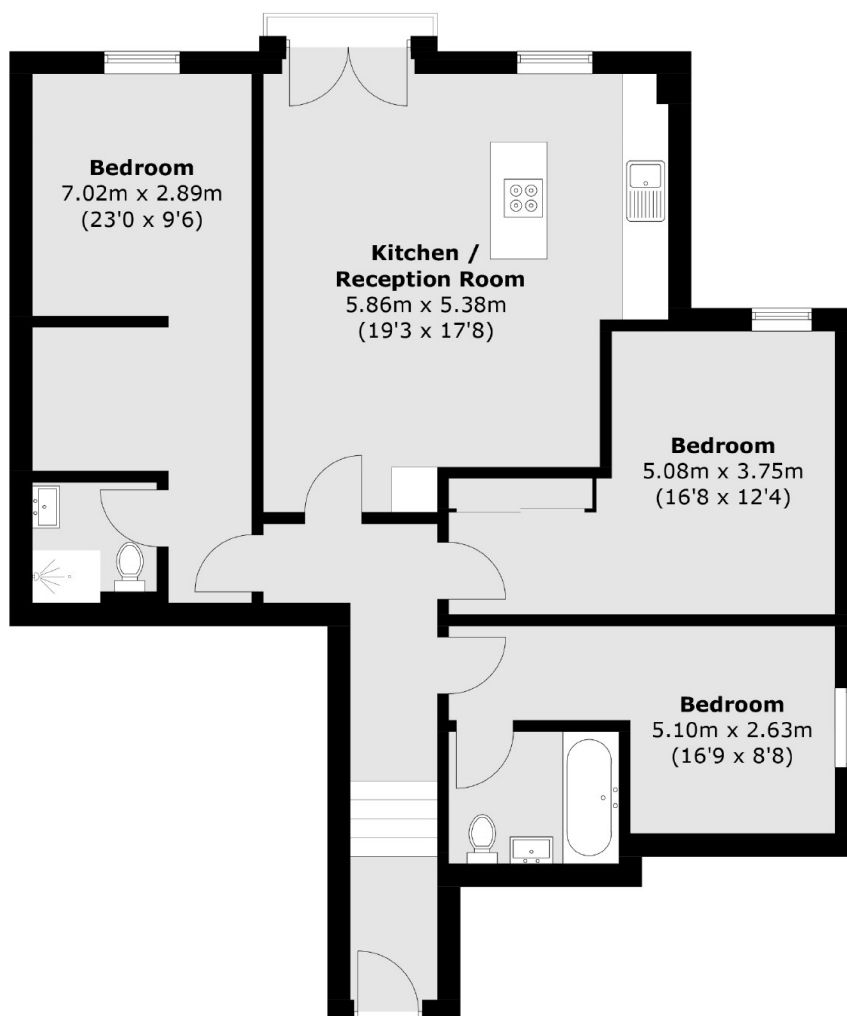
This immaculately presented three bedroom, two bathroom apartment situated in one of Ealing's finest developments. On the first floor there is an en-suite bathroom and dressing room to the principle bedroom, open plan kitchen/living area, a residents gym, communal gardens and allocated parking.

This property is located on Eaton Rise along many popular bus routes. Other transport links include Ealing Broadway station (Central Line, District Line, Mainline Rail and The Elizabeth Line). Montpelier Primary School is also a short walk away.

Features

- Three Bedrooms
- Two Bathrooms
- Allocated Parking
- Communal Garden
- Communal Gym
- Long Lease

Eaton Rise, London, W5



Total area (approx.): 90.5 sq. m (974.1 sq. ft)

Dexters

Ealing
2 New Ealing Broadway
London
W5 2NU
Sales
020 8810 0909

Energy Rating: . We aim to make our particulars both accurate and reliable. However they are not guaranteed; nor do they form part of an offer or contract. If you require clarification on any points then please contact us, especially if you're traveling some distance to view. Please note that appliances and heating systems have not been tested and therefore no warranties can be given as to their good working order.

 **RICS** | Regulated
Estate Agent
and Letting Agent

dexters.co.uk