



Mount Park Road, W5
£2,250,000

Dexters



Mount Park Road, W5

An opportunity to secure a rarely available six bedroom family home on one of Ealing's prime residential roads. With many original features retained, the property will benefit from modernisation to create the dream family home. There is a West facing garden and swimming pool to the rear with off street parking to the front.

With 2750sq.ft of living space over three floors there are two large reception rooms on the ground floor and a sizeable kitchen. There is a lower level basement which many properties locally have turned into habitable living space. There is over 100ft of West facing rear garden. Over the top two floors and split level landing areas there are six bedrooms and two bathrooms.

The property would benefit from modernisation throughout with many neighbouring homes having extended significantly to design the perfect forever home.

Mount Park Road is one of Ealing's most sought after locations being just moments from the green space of Haven Green and the busy transport hub of Ealing Broadway. There is the Elizabeth Line, Central, District and National Rail services all on your doorstep.

Features

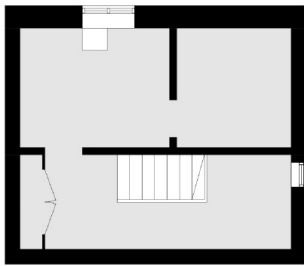
- Six Bedrooms
- Two Reception Rooms
- 100ft+ West Facing Garden
- Development Potential
- Swimming Pool
- Off Street Parking



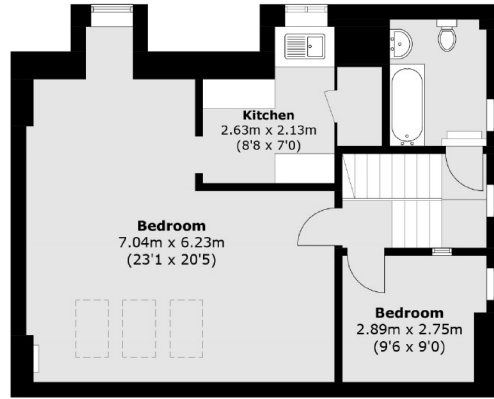




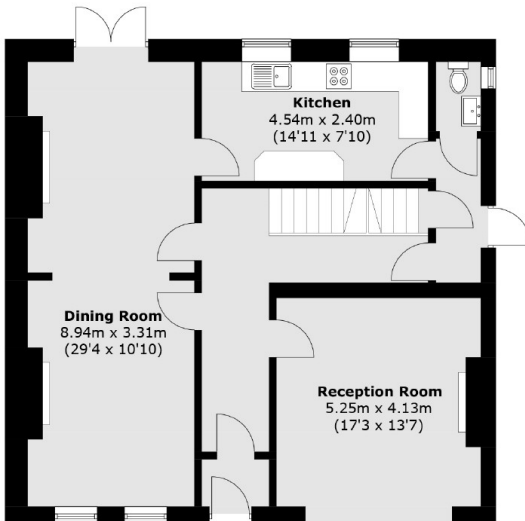
Mount Park Road, London, W5



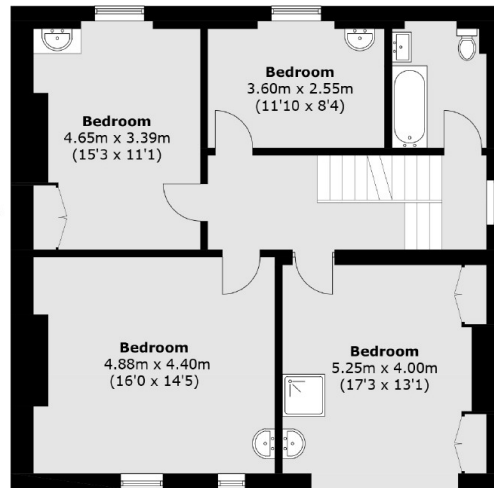
Basement



Second Floor



Ground Floor



First Floor

Total area (approx.): 255.5 sq. m (2,750.0 sq. ft)
(Including Basement)