



Elmbank Way, W7

£595,000

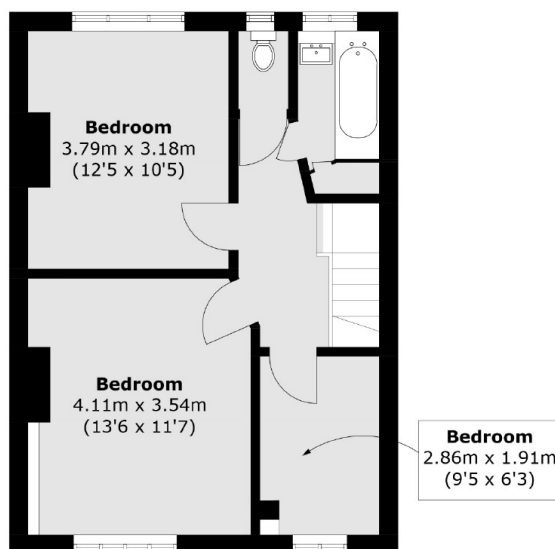
This 1930's three bedroom family home offers significant potential to modernise and extend as many neighbouring properties have done. Currently, there are three bedrooms and two reception rooms along with rear vehicular access.

Elmbank Way is a popular residential road approximately a mile from Hanwell Elizabeth Line station. There are well regarded local schools, primary and secondary.

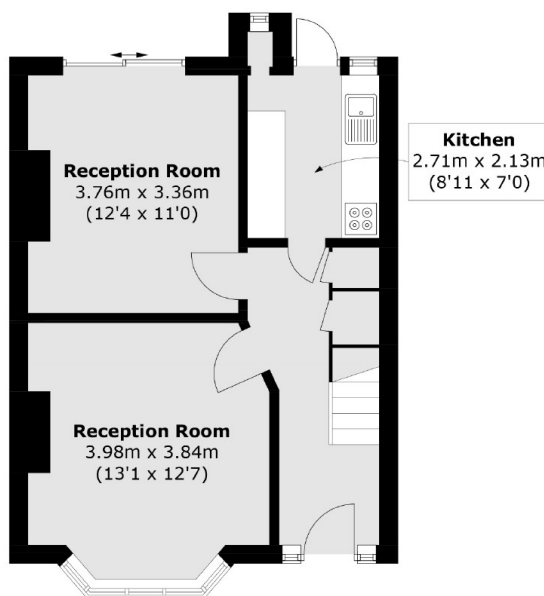
Features

- Three Bedrooms
- Two Receptions
- Modernisation Required
- Extension Potential
- 1930's Home
- Large Garden

Elmbank Way, London, W7



First Floor



Ground Floor

Total area (approx.): 88.9 sq. m (956.8 sq. ft)