



Mount Avenue, W5
£2,500,000



Mount Avenue, W5

This wonderful Victorian family home, which has had only three previous owners, has six bedrooms, three reception rooms, three bathrooms, a South facing garden, a spacious kitchen/breakfast room and off-street parking for multiple cars. There are period features and high ceilings throughout. The Lower Ground can be used as part of the house or as a self-contained granny annexe; and when the house was built, the top floor was organised for use by the maids.

The main entrance is located on the raised ground floor, with a large receiving hallway. On this level there are two reception rooms, linked front to back, and the modern spacious kitchen/breakfast room leading onto the South facing garden. There is an internal staircase leading to the lower ground floor with the sixth bedroom, third reception area and shower room. If required, this can be separated from the main accommodation as it has its own side entrance. Perfect for use as a granny annexe.

To the first floor there are two large double bedrooms and a third smaller room, currently used as an office. A larger than average family bathroom, with a free-standing roll top bath and separate shower unit. On the top floor, which was organised as the maids' rooms when the house was built, there are two further double bedrooms, with a jack and jill en-suit shower room.

Features

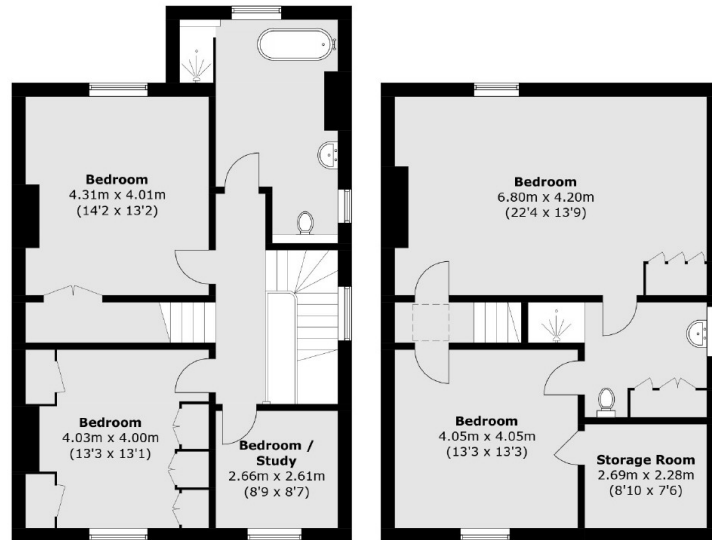
- Six Bedrooms
- Three Reception Rooms
- Three Bathrooms
- Period Features Throughout
- South Facing Garden
- Off Street Parking







Mount Avenue, London, W5



First Floor

Second Floor



Lower Ground Floor

Ground Floor

Total area (approx.): 272.1 sq. m (2,928.8 sq. ft)