



## Tewkesbury Road, W13

£495,000

A split-level two double bedroom apartment within a new development offering nearly 1000 sq.ft of living space with its own private terrace and far reaching views. No onward chain.

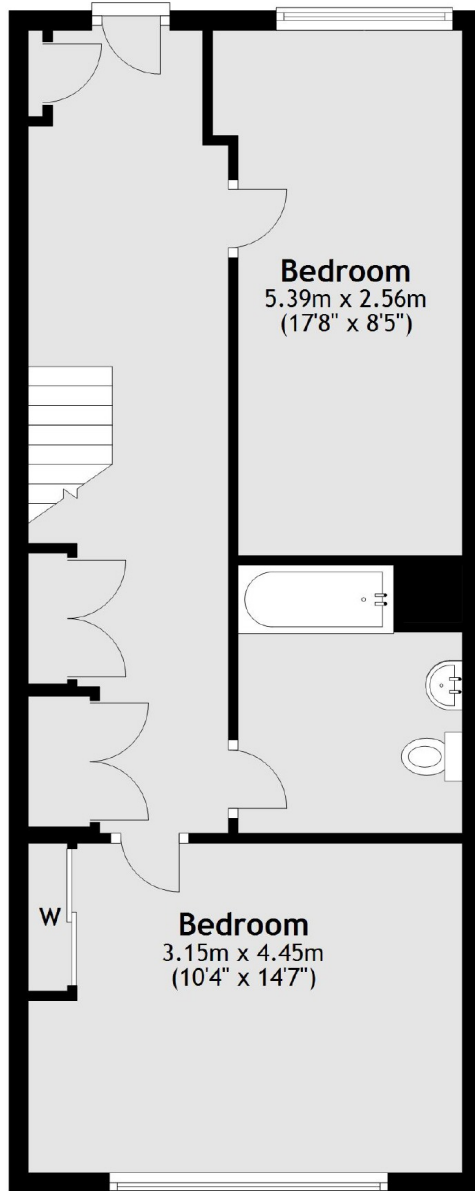
West Ealing station (Elizabeth Line) and a Waitrose superstore are within half a mile of the property, with easy access to the Broadway shops and restaurants. Set around a residents only central courtyard with communal gardens and a children's play area also.

### Features

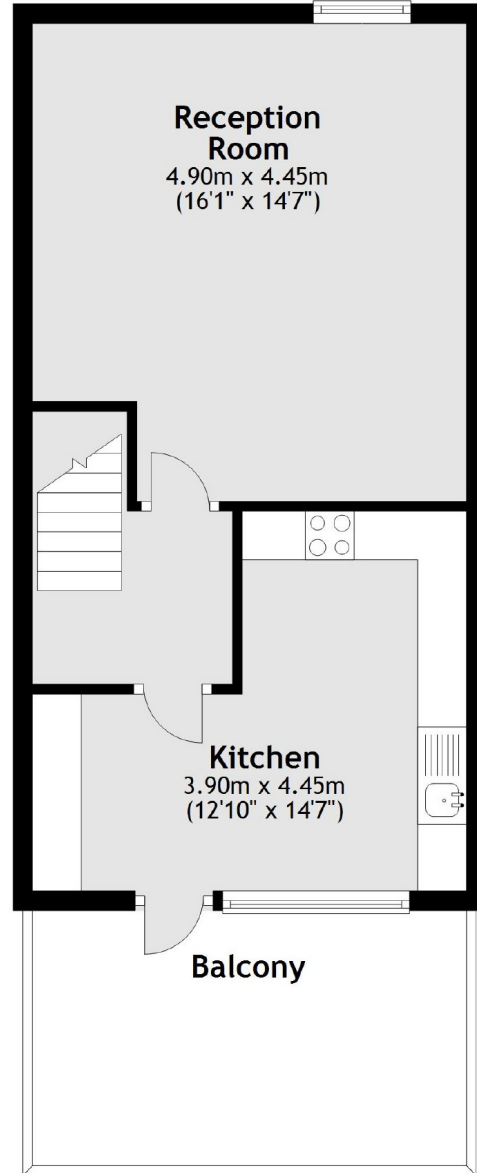
- Two Double Bedrooms
- Split-Level
- Private Terrace
- New Development
- Close To Transport
- Central Residents Courtyard

# Tewkesbury Road, London, W13

Fourth Floor



Fifth Floor



Total area: approx. 91.8 sq. metres (988.0 sq. feet)