



Haven Lane, W5

£1,200,000

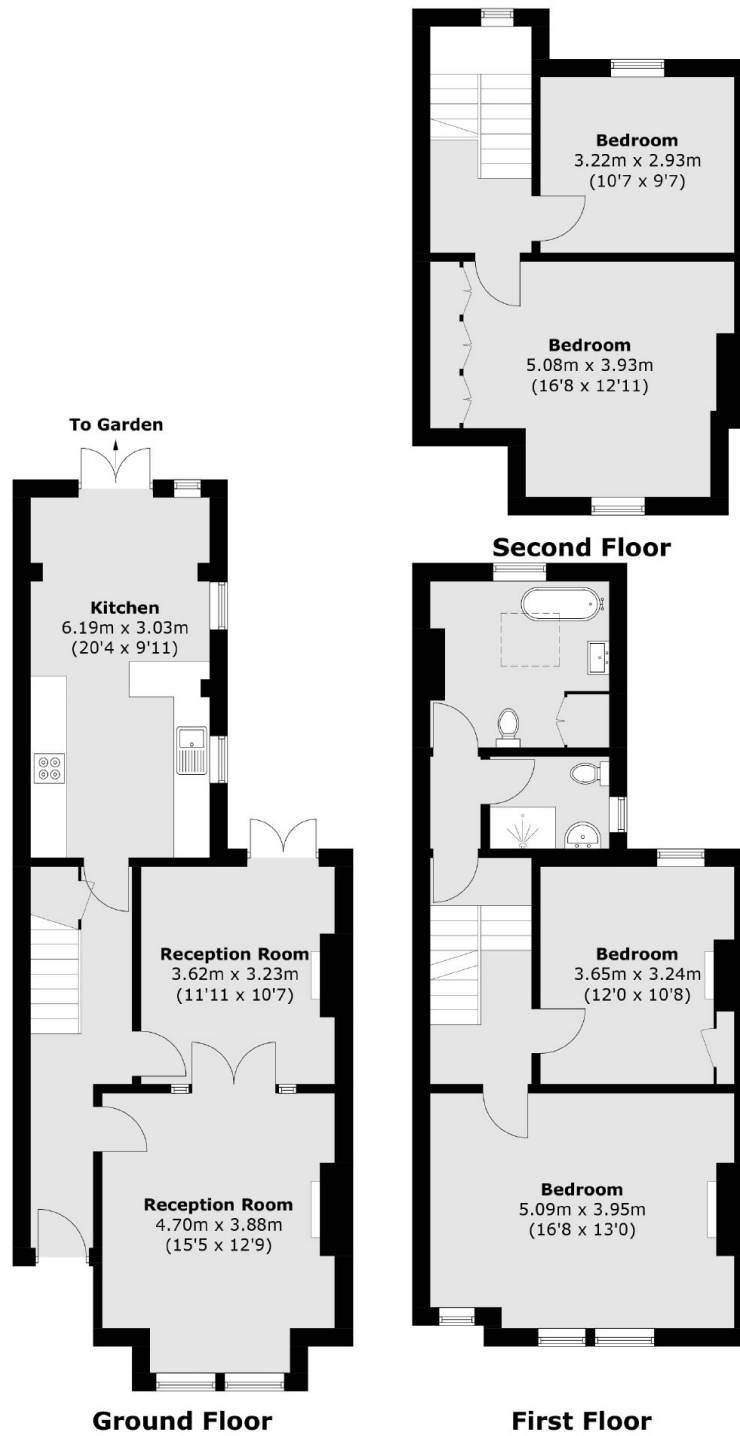
This Edwardian house is in the heart of Ealing Broadway. Naturally arranged over three floors there are four bedrooms, two bathrooms, two receptions and a kitchen/breakfast room with extension potential. Many period features have been retained and there is off street parking to the front.

Located in the heart of Ealing Broadway with many local amenities on your doorstep from boutique shops, bars, pubs, restaurants and convenience stores. Transport links include Ealing Broadway, Central Line, District Line, Mainline and Elizabeth Line with many bus routes too.

Features

Edwardian Home
Central Ealing Broadway
Four Bedrooms
Off Street Parking
Close To Transport
Period Features

Haven Lane, London, W5



Total area (approx.): 147.3 sq. m (1,585.5 sq. ft)