

The Grove, W5

£675,000

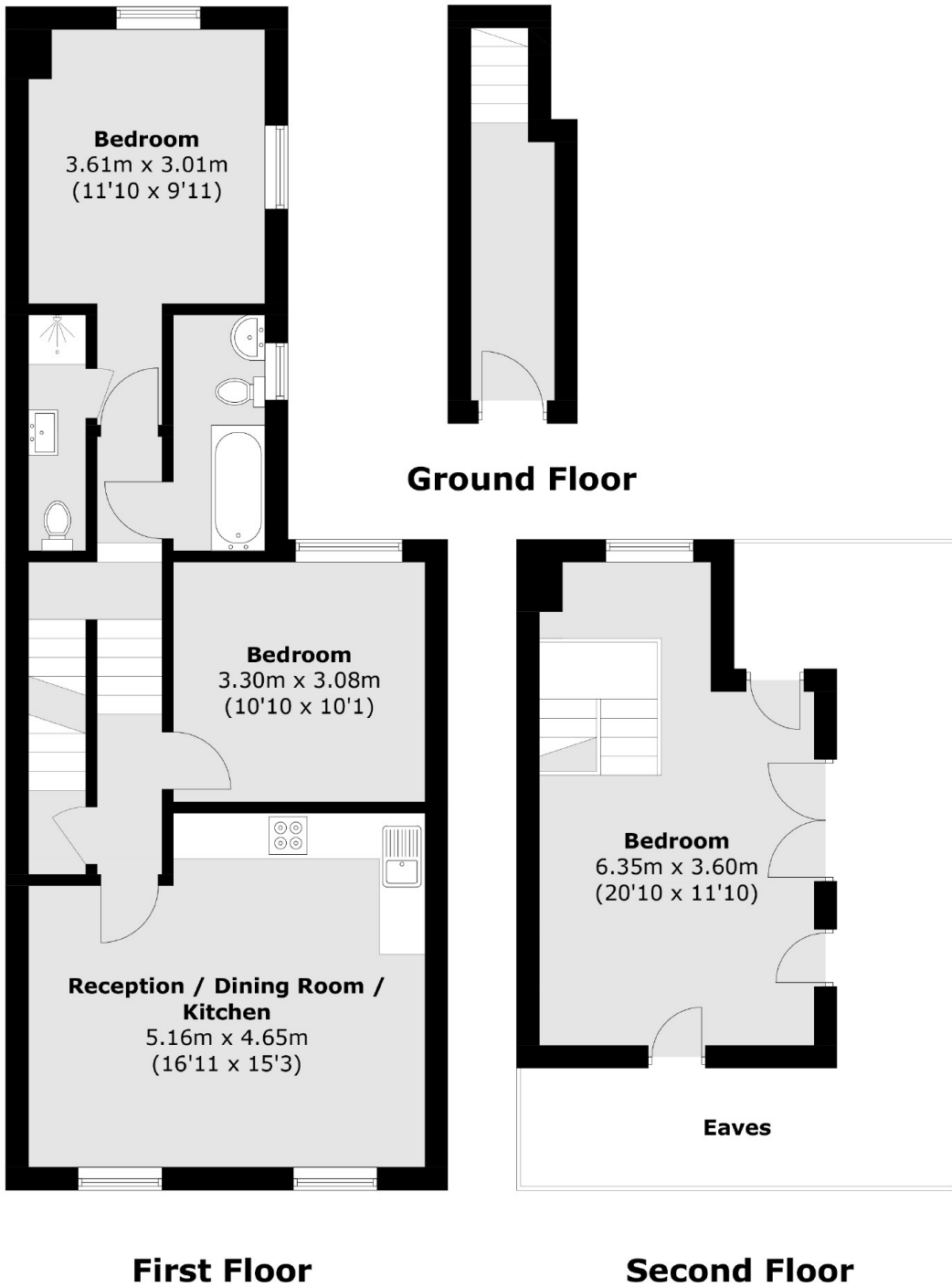
A three bedroom split-level maisonette with allocated parking to the front, your own entrance and private garden to the rear. There are three bedrooms and two bathrooms over the first and second floors, with an open-plan kitchen/living area to the front of the house.

The Grove is a no through road, quiet from traffic, but in the centre of Ealing. The shopping centre, restaurants, gym and all manner of facilities are just over the road and the station is approximately half a mile. Ideally located for Elizabeth, Central, District and Piccadilly lines.

Features

- Maisonette
- Allocated Parking
- Private Garden
- Long Leasehold
- New Conversion
- No Onward Chain

The Grove, London, W5



Total area (approx.): 89.0 sq. m (957.9 sq. ft)
(Excluding Eaves)