



## Mount Park Road, W5

### £499,999

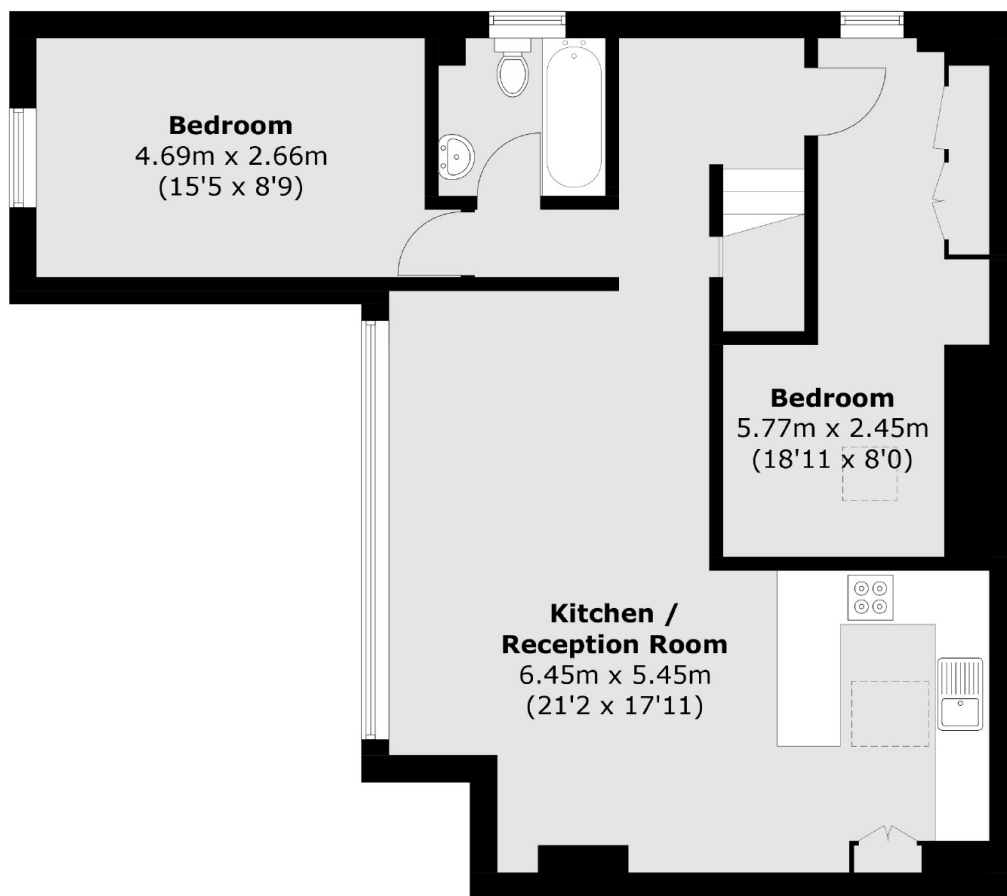
This top floor two double bedroom period conversion is presented in excellent condition throughout with no onward chain and share of freehold. There is a split level entrance staircase, open plan kitchen/reception full of natural light, family bathroom, two double bedrooms and loft storage.

Mount Park Road is one of Ealings most sought after locations being just moments from the green space of Haven Green and the busy transport hub of Ealing Broadway. There is the Elizabeth Line, Central, District and National Rail services all on your doorstep.

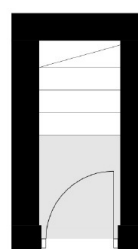
### Features

- Two Bedrooms
- Top Floor
- Period Conversion
- No Onward Chain
- Share Of Freehold
- Centrally Located

# Mount Park Road, London, W5



**Second Floor**



**First Floor**

Total area (approx.): 72.3 sq. m (778.2 sq. ft)