



Roseacre Close, W13

£850,000

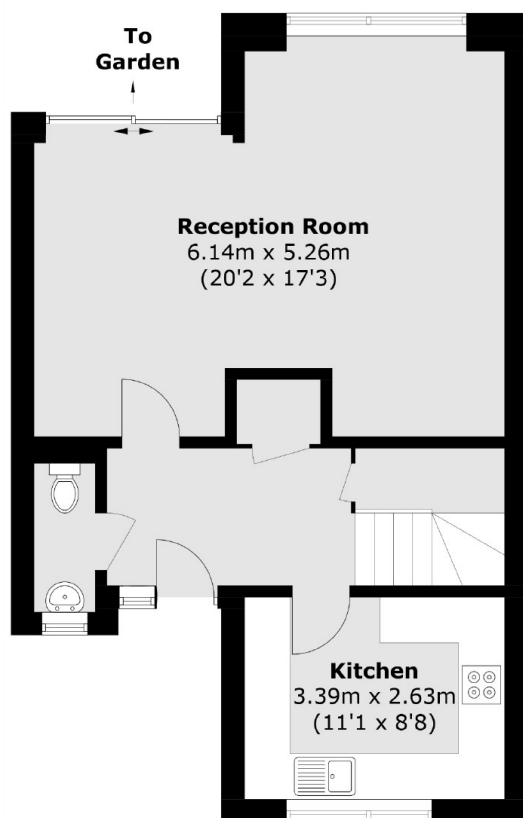
This three bedroom mid-terrace house is in good condition throughout. The property has large gardens to the front and rear, a separate garage and is also overlooking an open green space. A wonderful family home in a quiet cul-de-sac location.

Located within a highly sought after development there are well regarded private and state schools in close proximity. Pitshanger Lane is moments away, along with Cleveland and Pitshanger Parks. Easy access for both Ealing Broadway and West Ealing Crossrail stations.

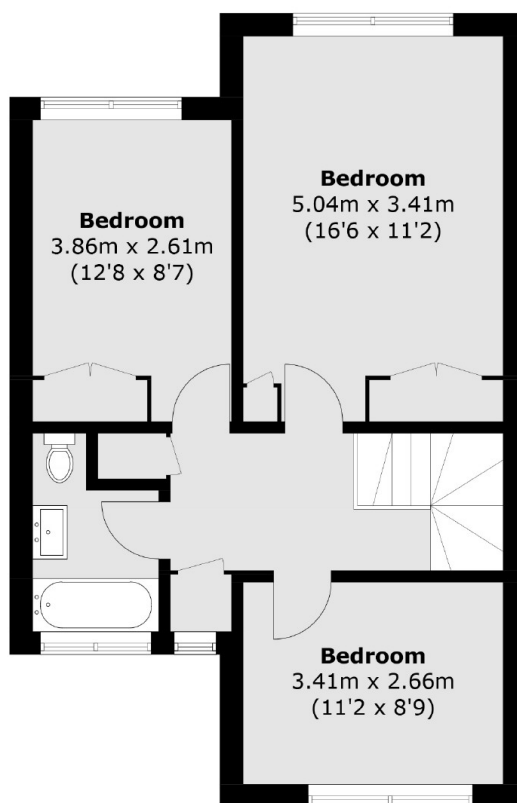
Features

- Three Bedrooms
- Garage
- Double Reception Rooms
- West Facing Garden
- Sought After Development
- Overlooking Green Space

Roseacre Close, London, W13



Ground Floor



First Floor

Total area (approx.): 102.7 sq. m (1,105.4 sq. ft)