



Copley Close, W7

£380,000

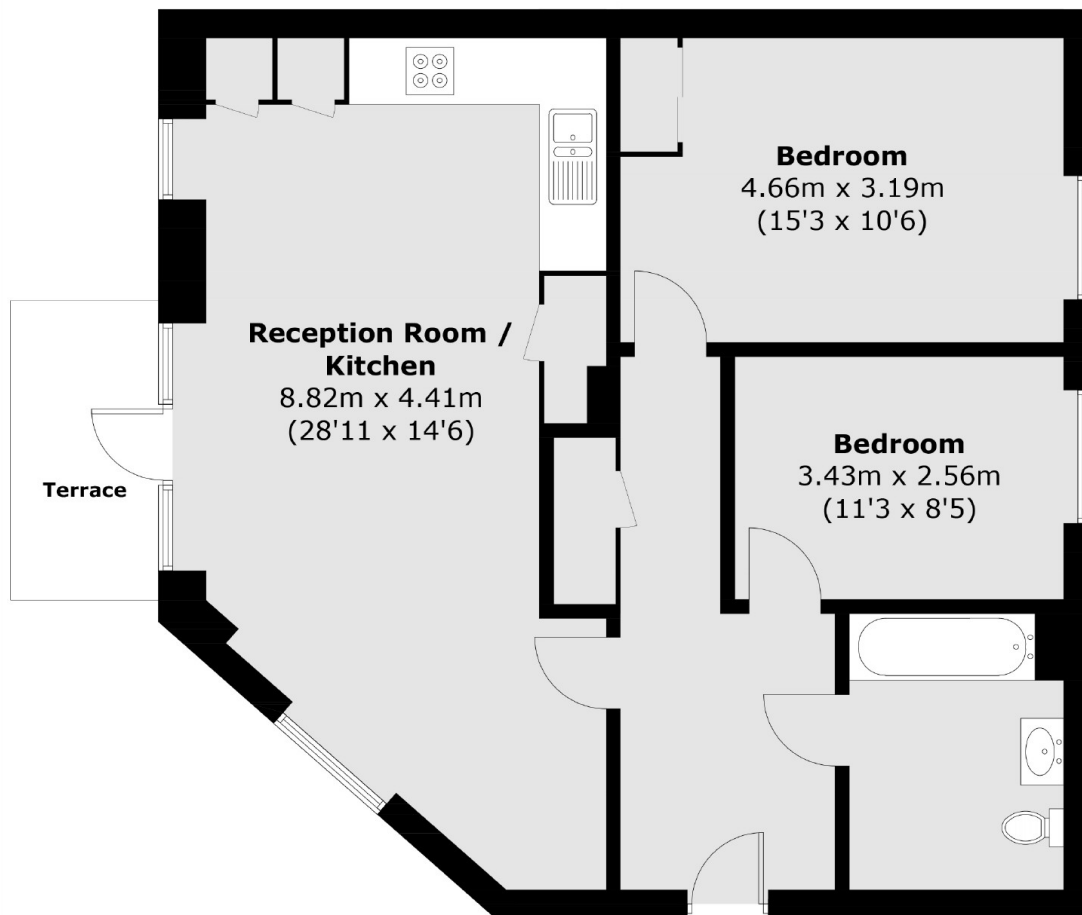
This purpose built ground floor, two bedroom apartment has a private balcony, a long lease and a gated residents car park.

As part of the Copley Close regeneration programme Alton Court is ideally located for access to Castle Bar Park station. Pitshanger Lane is within walking distance, along with a wide range of green spaces such as Perivale Park and Pitshanger Park.

Features

- Two Bedrooms
- Ground Floor
- Private Balcony
- Gated Residents Parking
- Close to Transport

Copley Close, London, W7



Ground Floor

Total area (approx.): 78.7 sq. m (847.1 sq. ft)
Terrace : 4.9 sp. m (52.7 sq. ft)