



Mount Avenue, W5

£550,000

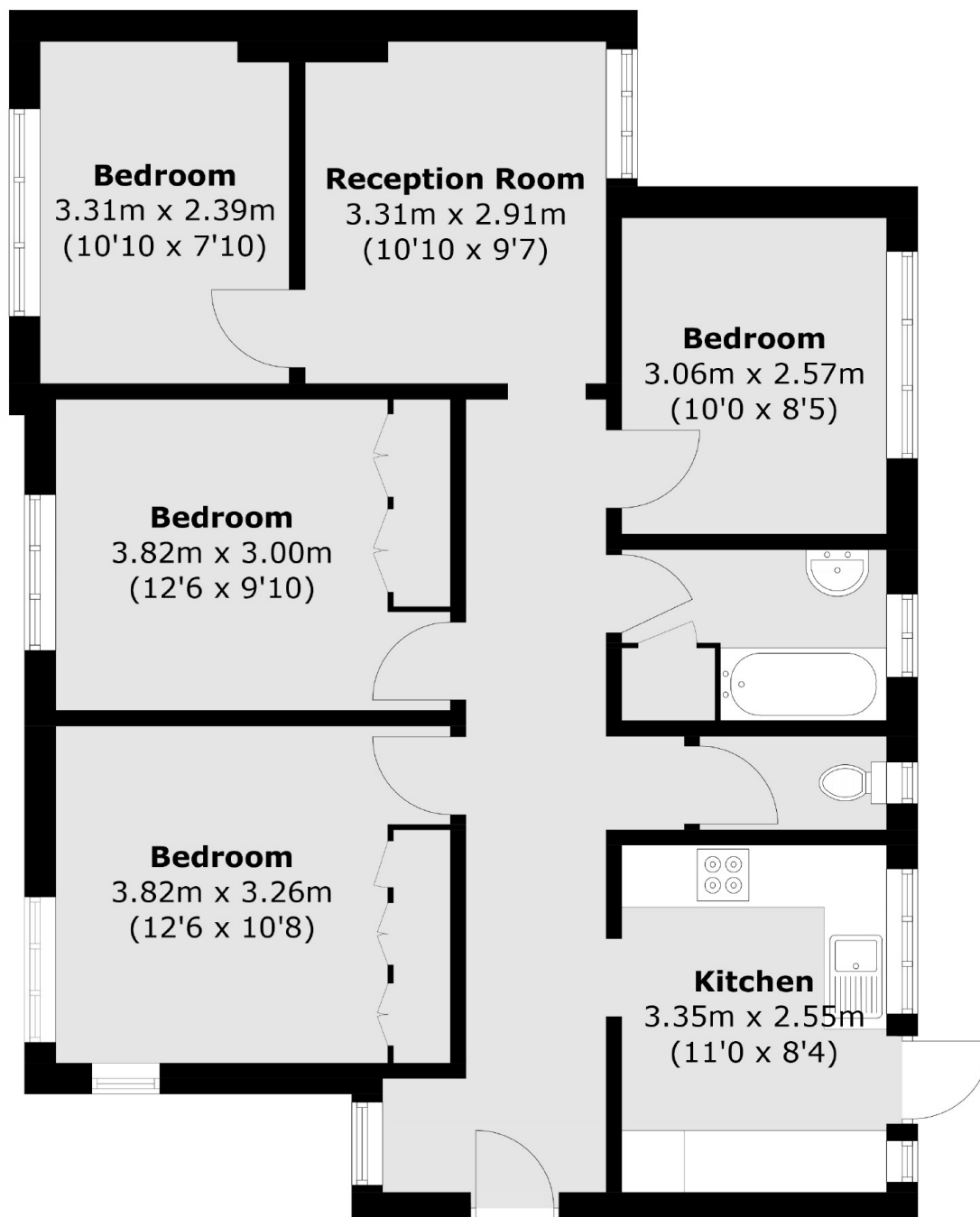
A three/four bedroom apartment located on the second floor of a purpose built development. Originally configured as three bedrooms, the current reception room has been divided to create a fourth. There is a separate kitchen, family bathroom and separate w.c.

Located on the popular and sought after Mount Avenue with outstanding local schools close by. Ealing Broadway transport hub is less than a mile, along with the shopping centre, supermarkets and restaurants.

Features

- Purpose Built
- Naturally Three Bedrooms
- Separate Kitchen
- Close To Schools
- No Onward Chain
- Share Of Freehold

Mount Avenue, London, W5



Total area (approx.): 81.0 sq. m (871.9 sq. ft)