

Ranelagh Road, W5

£700,000

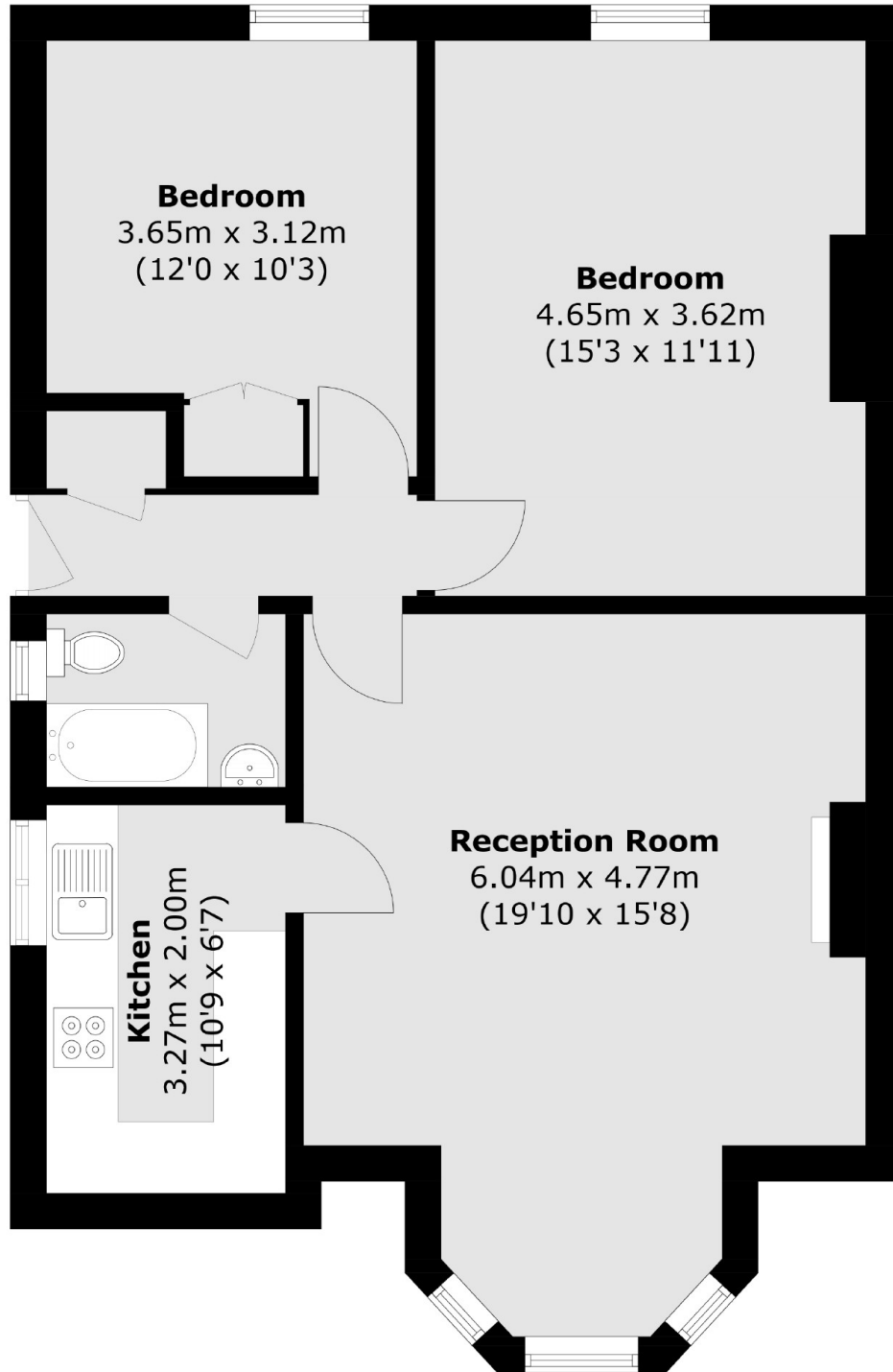
This immaculately presented two double bedroom ground floor apartment has a private south facing garden, its own entrance, a share in the freehold and is being sold with no onward chain.

This property is located in South Ealing with easy access to the green spaces of Gunnersbury Park, Ealing Common and Lammas Park. Transport links include South Ealing tube station (Piccadilly line, Heathrow Express) and Ealing Broadway station (Central Line, District Line, Main line Rail and Elizabeth Line) which is 0.8 miles away .

Features

- Two Double Bedrooms
- Victorian Building
- Private South Facing Garden
- No Onward Chain
- Share of Freehold
- Close to Transport Links

Ranelagh Road,
London, W5



Total area (approx.): 67.7 sq. m (728.7 sq. ft)