



Park Hill, W5

£680,000

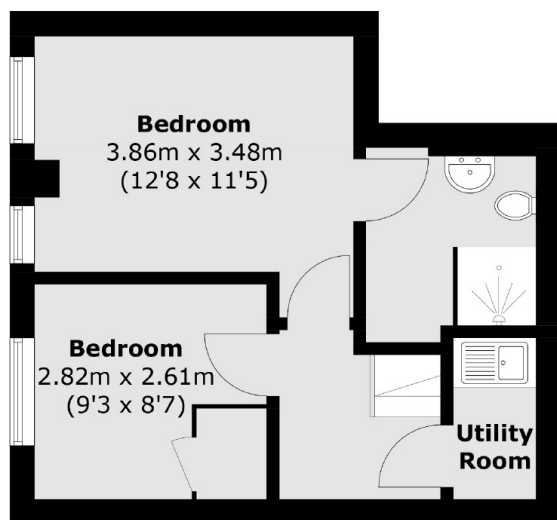
A split level two bedroom conversion apartment set within a detached Victorian building. Period features such as fireplaces, cornicing and sash windows have been retained whilst benefiting from modernisation. There is a private garden and off street parking.

Park Hill is a tree lined residential street, less than half a mile from the transport links and amenities of Ealing Broadway. Widely renowned as being one of Ealing's most sought after locations and prime residential roads.

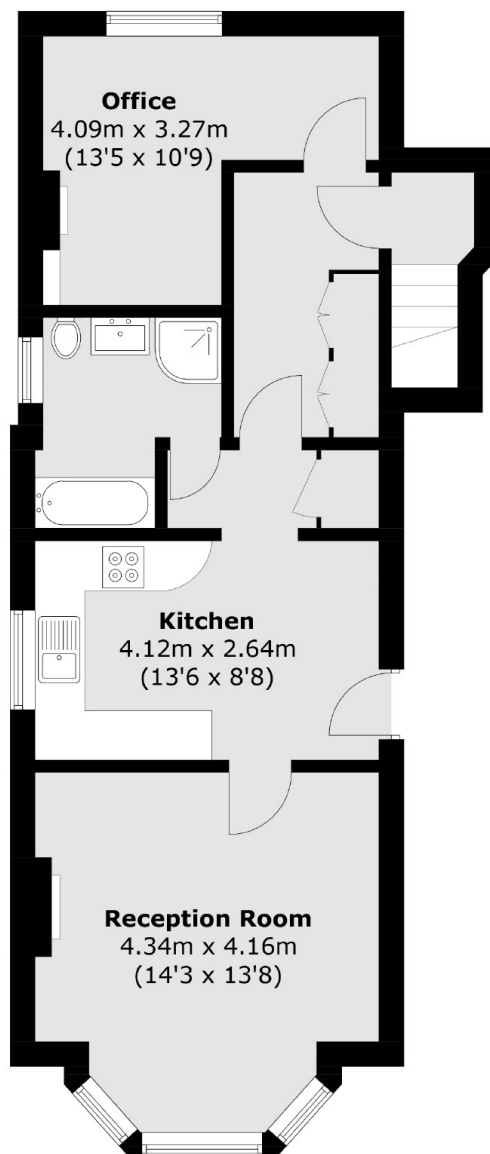
Features

- Two Bedrooms
- Two Bathrooms
- Two Receptions
- Off Street Parking
- Private Garden
- No Onward Chain

Park Hill, London, W5



Lower Ground Floor



Ground Floor

Total area (approx.): 86.2 sq. m (927.8 sq. ft)