

Ealing Village, W5

£575,000

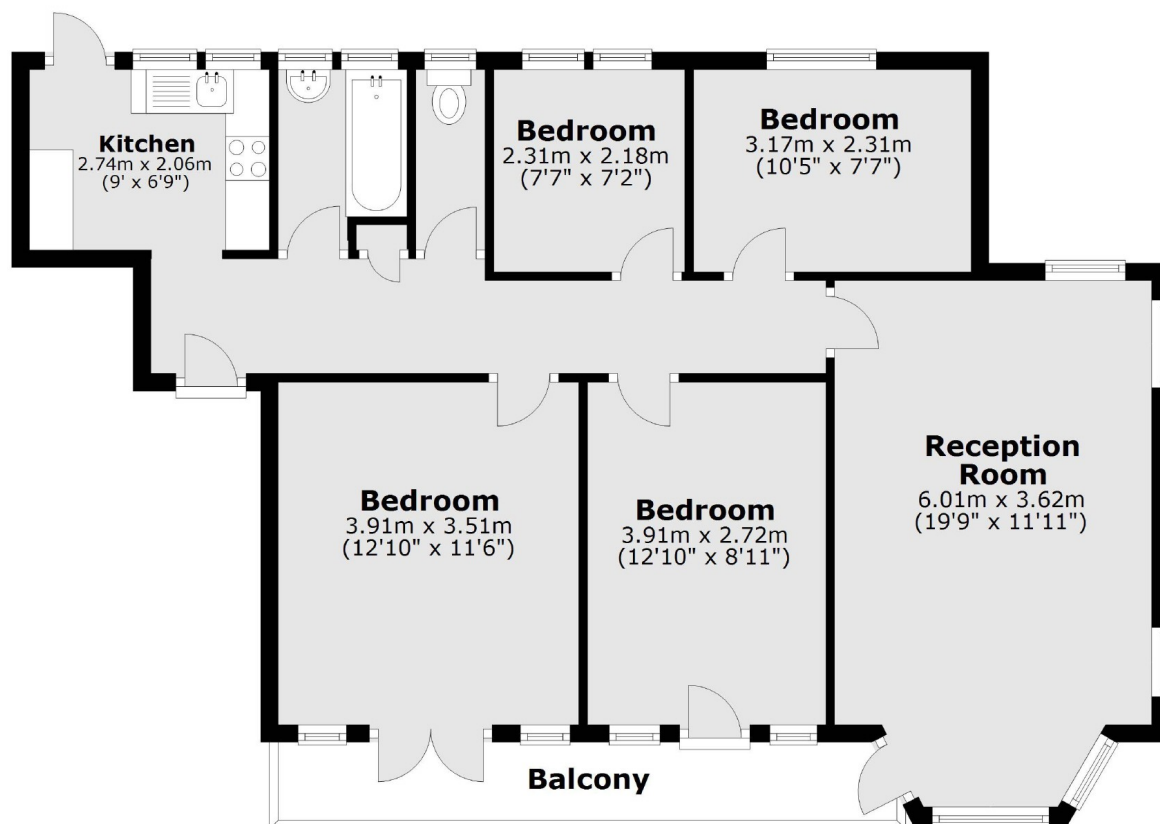
This four bedroom apartment is situated on the first floor. Located at the end of the block the property benefits from a triple aspect outlook, private balcony, large reception room and separate kitchen. This Art Deco development is privately gated with swimming pool, tennis courts and caretaker.

Ealing Village is centrally located less than half a mile to Ealing Broadway Station (Central Line, District Line and Crossrail) and under a quarter of a mile to North Ealing Station (Picadilly Line).

Features

- Four Bedrooms
- Triple Aspect
- Balcony
- Swimming Pool
- Tennis Courts
- No Onward Chain

Ealing Village, London, W5



Main area: Approx. 79.7 sq. metres (858.3 sq. feet)
Plus balconies, approx. 6.9 sq. metres (74.7 sq. feet)