



Steele Road, W4

£675,000

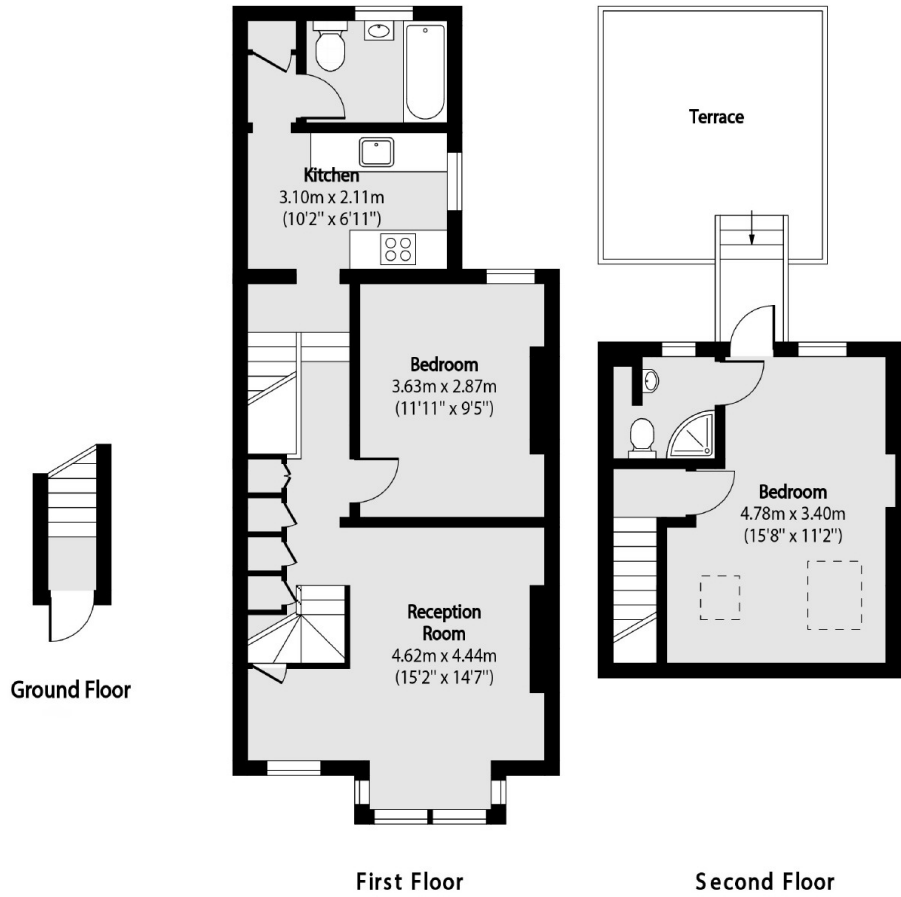
An immaculately presented two double bedroom, two bathroom split-level period conversion which has been modernised within the last five years. With private south-facing terrace, separate kitchen, polished plaster walls and new sash windows.

Steele Road is within 0.3 miles of South Acton station (Overground) and 0.2 miles of Chiswick Park station (District). The property is also close to the many shops, restaurants and bars of Chiswick High Road.

Features

- Split-Level
- Modern
- Two Double Bedrooms
- Two Bathrooms
- South-Facing Terrace
- Close To Transport

Steele Road, London, W4



Total area (approx): 71.16 sq m (766 sq. ft)

Terrace total area (approx): 14.68 sq m (158 sq. ft)