

Wellesley Road, W4 £675,000

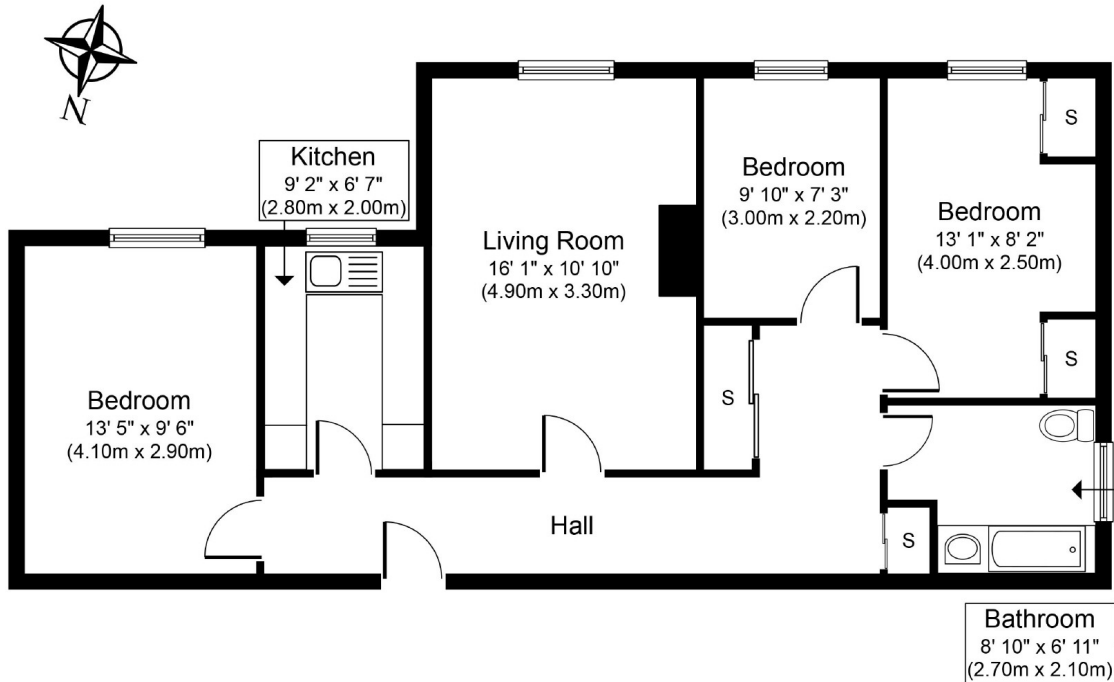
Offered to the market with tenants already in place is a recently refurbished apartment in this popular mansion block with three double bedrooms, one with plenty of built-in storage, a communal garden and a swimming pool.

Wellesley Road is well-placed for those needing access to Chiswick High Road and its amenities as well as both Chiswick Park and Gunnersbury tube stations.

Features

- Three Double Bedrooms
- One Bathroom
- Buy To Let Investors
- Communal Gardens
- Swimming Pool
- Separate Kitchen

Wellesley Road, London, W4



First Floor
Approximate Floor Area
785 sq. ft.
(73.0 sq. m.)

10 Belgrave Court Wellesley Road Chiswick W4 4LG

Whilst every attempt has been made to ensure the accuracy of the floor plan contained here, measurements of doors, windows, rooms and any other items are approximate and no responsibility is taken for any error, omission, or mis-statement. This plan is for illustrative purposes only and should be used as such by any prospective purchaser or tenant. The services, systems and appliances shown have not been tested and no guarantee as to their operability or efficiency can be given.
Copyright V360 Ltd 2016 | www.virtual360.net

Dexters

Chiswick
388 Chiswick High Road
London
W4 5TF
Sales
020 8995 4321

Energy Rating: D. We aim to make our particulars both accurate and reliable. However they are not guaranteed; nor do they form part of an offer or contract. If you require clarification on any points then please contact us, especially if you're traveling some distance to view. Please note that appliances and heating systems have not been tested and therefore no warranties can be given as to their good working order.

 **RICS** | Regulated
Estate Agent
and Letting Agent

dexters.co.uk