



## Sutton Lane South, W4

£1,326 Per week

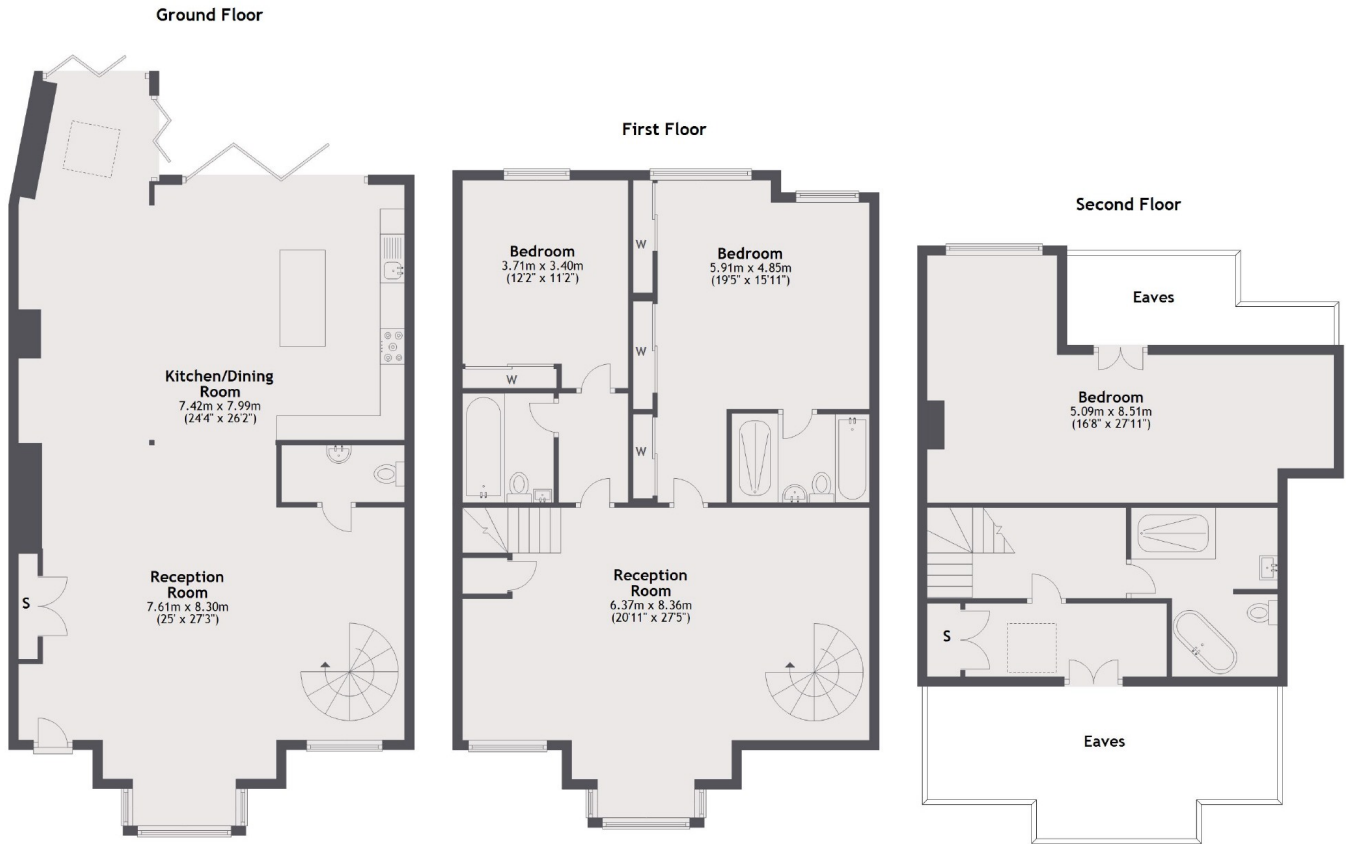
A three bedroom house in Grove Park that has been finished to the highest standard with over 2,700 sq.ft of space, two reception rooms and off-street parking.

Located within the sought after area of Grove Park and is also under a mile from Gunnersbury station, Chiswick mainline station and the amenities on Chiswick High Road.

### Features

- Three Bedrooms
- Three Bathrooms
- Two Reception Rooms
- High Specification
- Grove Park
- Close To Stations

# Sutton Lane South, London, W4



Total area: approx. 255.9 sq. metres (2755.0 sq. feet)