

Harvard Road, W4

£775,000

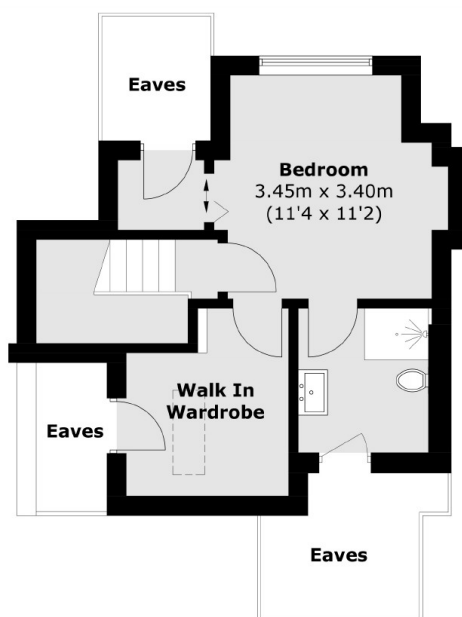
A well-presented three bedroom, two bathroom split-level period conversion in central Chiswick. With a share of freehold, separate kitchen and offered with no onward chain.

Harvard Road is located in the very heart of Chiswick and is conveniently close to Chiswick High Road, which offers an array of independent shops, bars and restaurants. The apartment is 0.4 miles walk away from Gunnersbury tube station (District Line & Overground), and 0.6 miles walk away from Chiswick Park tube station (District Line). There are also many local bus routes which offer direct access into the city, and the A4 can be easily accessed from Harvard Road.

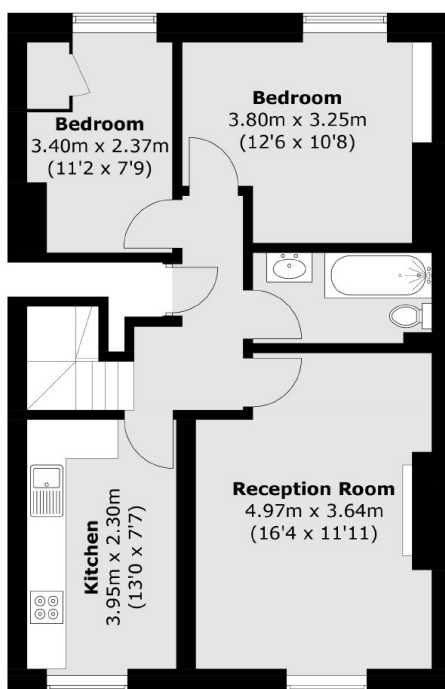
Features

- Three Bedrooms
- Two Bathrooms
- Split-Level
- Separate Kitchen
- Share Of Freehold
- No Onward Chain

Harvard Road, London, W4



Second Floor



First Floor

Total area (approx.): 87.9 sq. m (946.1 sq. ft)
(Excluding Eaves)