



Geraldine Road, W4

£850,000

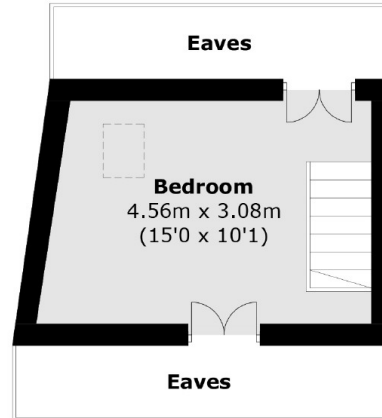
A period house set just off of the River Thames and near an outstanding school. The property has a spacious reception room that leads out to a private patio garden along with a separate kitchen. Upstairs there is two bedrooms and a further loft room. The property is offered chain free.

Geraldine Road is located within a half mile from Kew Bridge overground station and Gunnersbury underground station (District & Overground). The property is near local green spaces, the local shops of Thames Road and Kew Bridge. The river is also nearby as well as being near the outstanding Strand on the Green School.

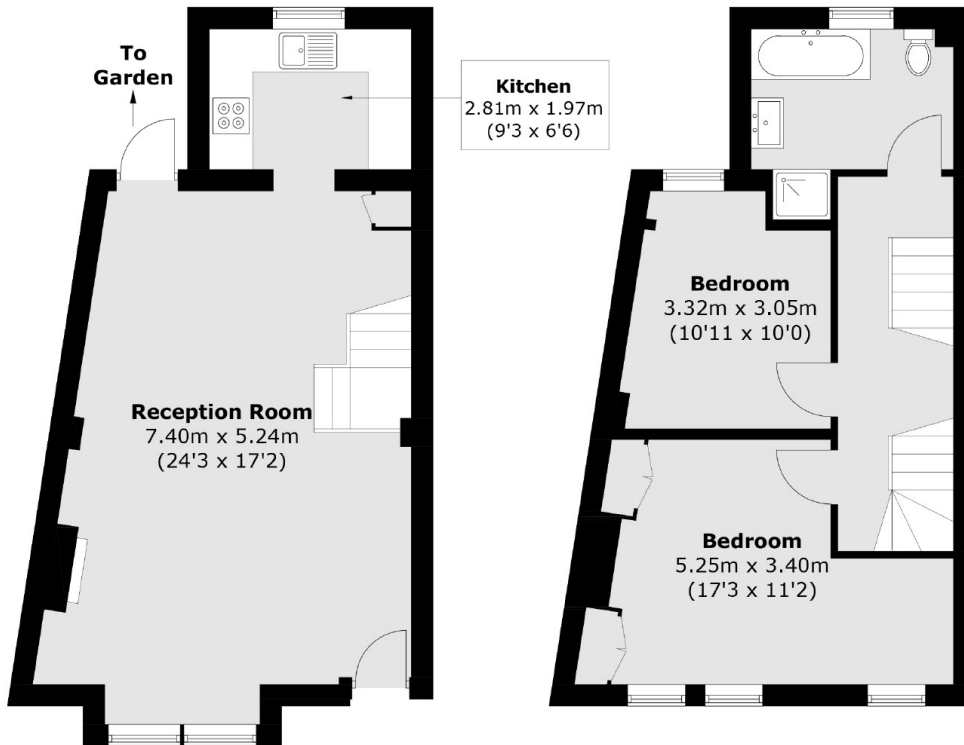
Features

- Riverside Location
- Chain Free
- Period House
- Close To Outstanding Schools
- Close To Shops
- Easy Access In/Out Of London

Geraldine Road,
London, W4



Second Floor



Ground Floor

First Floor

Total area (approx.): 92.7 sq. m (997.6 sq. ft)
(Excluding Eaves)