



Corney Reach Way, W4 £500,000

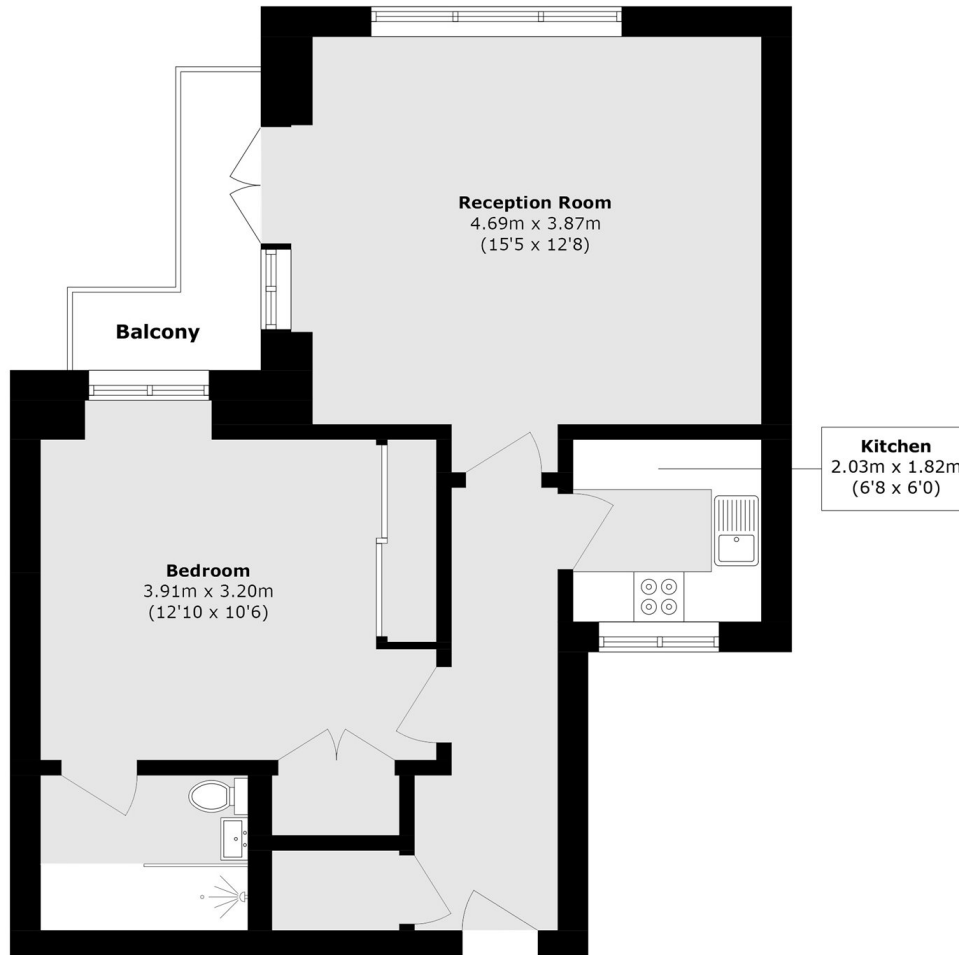
A spacious one bedroom apartment located in this sought-after riverside development. With direct river views, private balcony, lift access and secure underground parking.

Corney Reach Way is situated just moments from the Thames and Chiswick Pier. The property further benefits from use of communal gardens and is conveniently located for the recreational facilities of Chiswick House and grounds, the River Thames as well as Chiswick High Road and Turnham Green Underground Station, Chiswick (SWR) Station for trains to London Waterloo and very convenient road links.

Features

- One Double Bedroom
- Balcony
- Direct River View
- Allocated Underground Parking
- Lift Access
- Close To Transport

Corney Reach Way, London, W4



Total area (approx.): 48.8 sq. m (525.3 sq. ft)

Total area (approx.): 3.2 sq. m (34.4 sq. ft)