



Harvard Road, W4

£725,000

A well-presented three bedroom, two bathroom split-level period conversion in central Chiswick. With a share of freehold, separate kitchen and offered with no onward chain.

Harvard Road is located in the very heart of Chiswick and is conveniently close to Chiswick High Road, which offers an array of independent shops, bars and restaurants. The apartment is 0.4 miles walk away from Gunnersbury tube station (District Line & Overground), and 0.6 miles walk away from Chiswick Park tube station (District Line). There are also many local bus routes which offer direct access into the city, and the A4 can be easily accessed from Harvard Road.

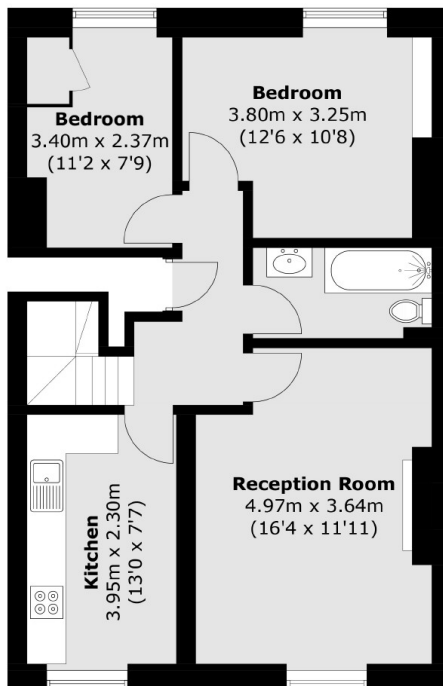
Features

- Three Bedrooms
- Two Bathrooms
- Split-Level
- Separate Kitchen
- Share Of Freehold
- No Onward Chain

Harvard Road,
London, W4



Second Floor



First Floor

Total area (approx.): 87.9 sq. m (946.1 sq. ft)
(Excluding Eaves)

Dexters

Chiswick
388 Chiswick High Road
London
W4 5TF
Sales
020 8995 4321

Energy Rating: D. We aim to make our particulars both accurate and reliable. However they are not guaranteed; nor do they form part of an offer or contract. If you require clarification on any points then please contact us, especially if you're traveling some distance to view. Please note that appliances and heating systems have not been tested and therefore no warranties can be given as to their good working order.

 **RICS** | Regulated
Estate Agent
and Letting Agent

dexters.co.uk