



Devonshire Street, W4

£575,000

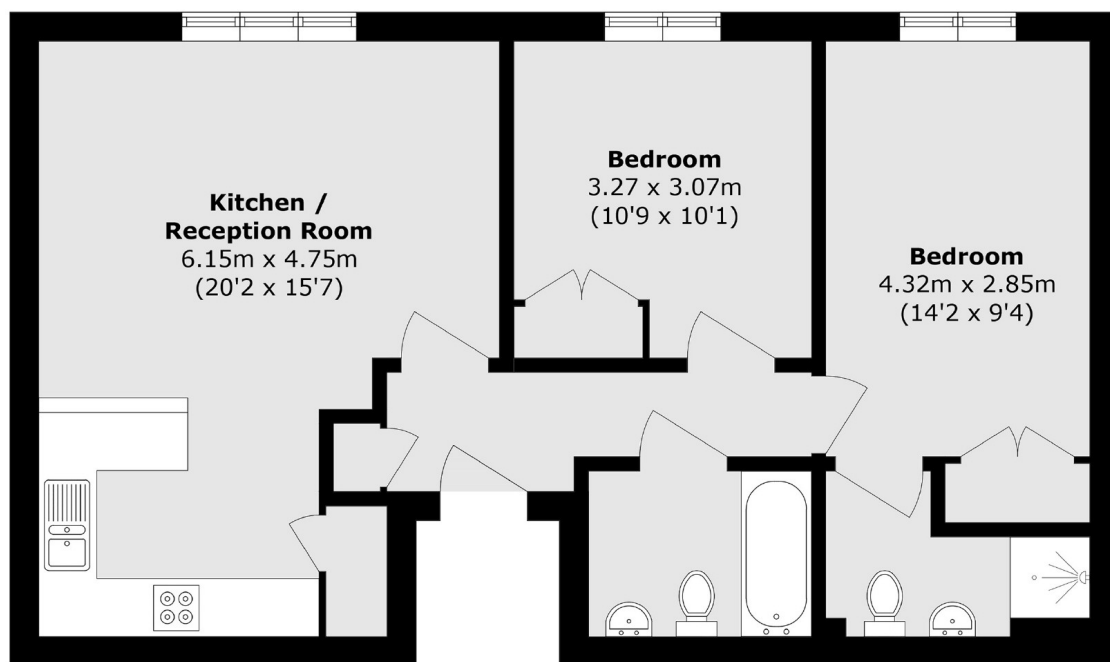
A modern two double bedroom, two bathroom apartment in a gated development located in the popular Glebe Estate area of Chiswick. With allocated off-street parking, underfloor heating, communal garden and offered with no onward chain.

Magdalen House is within a short walk of the River, Chiswick House and Grounds and Chiswick High Road's shops, cafés and restaurants. Transport links include Turnham Green station, local bus routes and the A4/M4 for routes in and out of London.

Features

- Two Double Bedrooms
- Two Bathrooms
- Lift Access
- Gated Off-Street Parking
- Communal Garden
- No Onward Chain

Devonshire Street,
London, W4



Total area (approx.): 63.5 sq. m (683.5 sq. ft)

Dexters

Chiswick
388 Chiswick High Road
London
W4 5TF
Sales
020 8995 4321

Energy Rating: C. We aim to make our particulars both accurate and reliable. However they are not guaranteed; nor do they form part of an offer or contract. If you require clarification on any points then please contact us, especially if you're traveling some distance to view. Please note that appliances and heating systems have not been tested and therefore no warranties can be given as to their good working order.

RICS Regulated
Estate Agent
and Letting Agent

dexters.co.uk