



Chiswick Lane, W4

£634 Per week

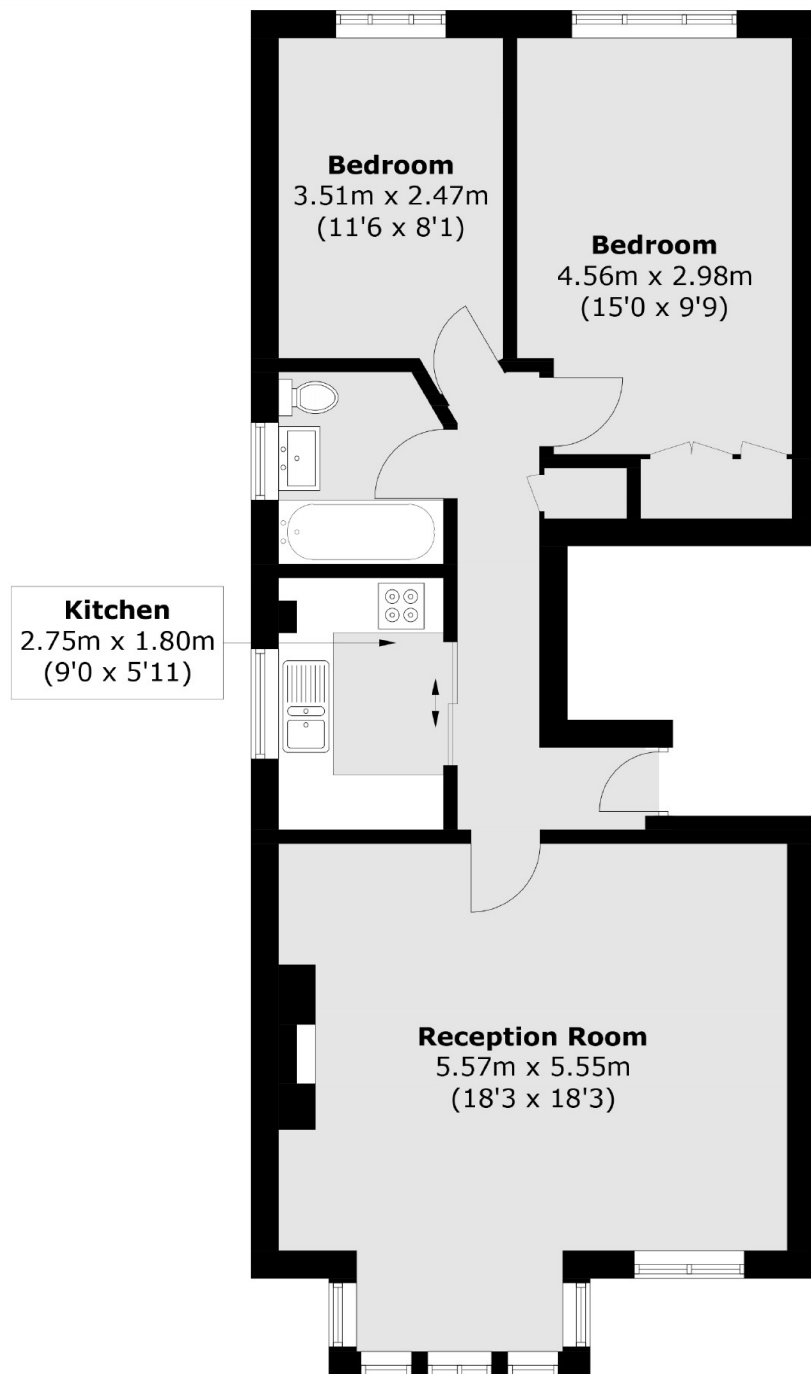
Situated on Chiswick Lane, this apartment with two double bedrooms features a spacious reception room, a separate kitchen, two bedrooms, and a generously sized family bathroom.

This apartment boasts an ideal location, offering convenient access to Chiswick High Road's local amenities. Additionally, it is situated just a short distance away from the heritage site of Chiswick Park and the scenic River Thames.

Features

- Two Bedrooms
- Modern Kitchen
- Large Reception
- Transport Links
- Built In Storage
- Great Location

Chiswick Lane,
London, W4



Total area (approx.): 68.0 sq. m (731.9 sq. ft)

Dexters

Chiswick
388 Chiswick High Road
London
W4 5TF
Lettings
020 8995 5439

Energy Rating: C. We aim to make our particulars both accurate and reliable. However they are not guaranteed; nor do they form part of an offer or contract. If you require clarification on any points then please contact us, especially if you're traveling some distance to view. Please note that appliances and heating systems have not been tested and therefore no warranties can be given as to their good working order.

 **RICS** | Regulated
Estate Agent
and Letting Agent

[dexters.co.uk](https://www.dexters.co.uk)