



## Chiswick High Road, W4

£530 Per week

A one bedroom architecturally designed apartment within a brand new development on Chiswick High Road. The property is in excellent condition and has wood flooring throughout.

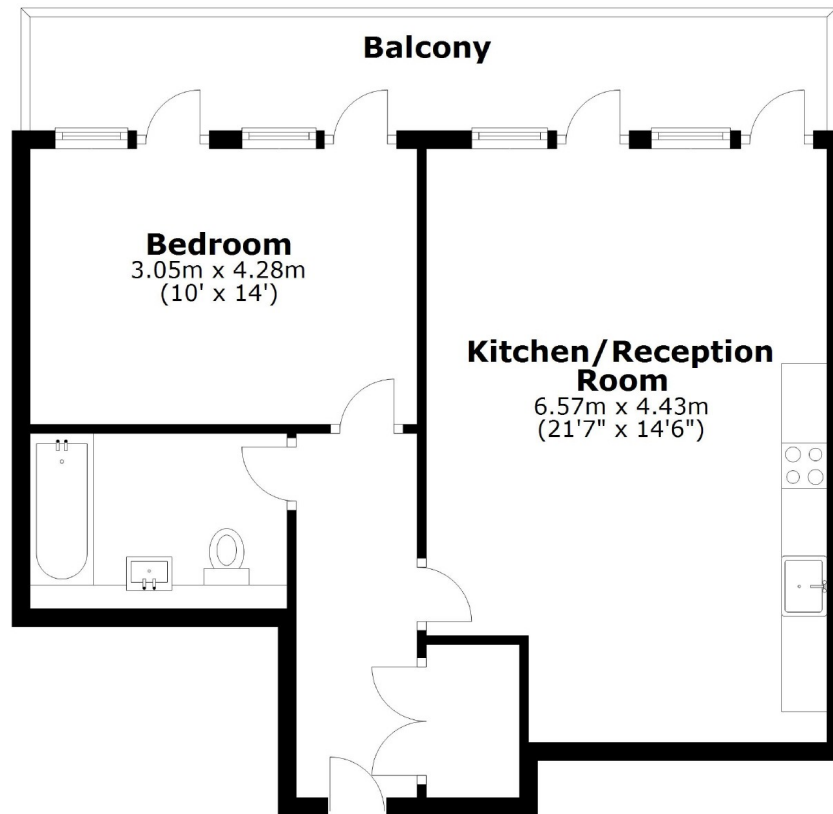
Perfectly placed for Chiswick High Road's bars, restaurants and boutique shops and under half a mile from Chiswick Park and Turnham Green tube stations.

### Features

Brand New  
One Bedroom  
Private Balcony  
Winter Garden  
New Development  
Central Chiswick

Chiswick High Road,  
London, W4

## Second Floor



Main area: Approx. 55.0 sq. metres (591.8 sq. feet)  
Plus balconies, approx. 11.9 sq. metres (128.3 sq. feet)