



## Clarence Road, W4

### £575,000

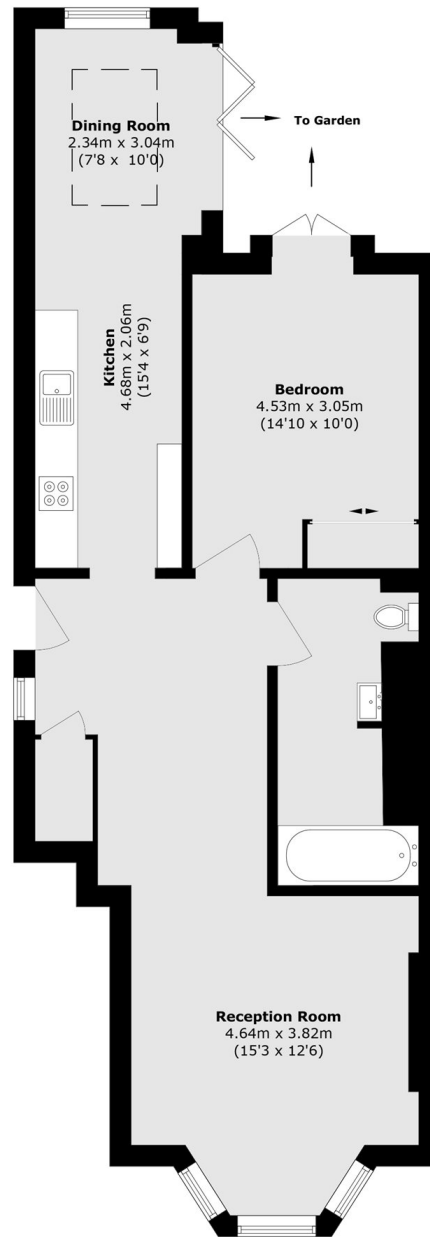
Offered to the market with no onward chain and in stunning condition, this flat really is a must-see. Super location, parking to the front, your own front door, private landscaped garden, a wealth of period features, and immaculate throughout -- this really is a cracker.

Clarence Road sits just off Chiswick High Road, close to excellent transport links including Gunnersbury (Overground & District line), Kew Bridge (Overground to Waterloo), and easy access to the A4/M4 and North Circular. Chiswick High Road offers a wide range of shops, restaurants, and amenities, while nearby Strand-on-the-Green provides riverside views and scenic walks.

### Features

- Own front door
- Period conversion
- Parking
- Private garden
- Stunning condition
- Wealth of charm

# Clarence Road, London, W4



Total area (approx.): 70.6 sq. m (759.9 sq. ft)

## Dexters

Chiswick  
388 Chiswick High Road  
London  
W4 5TF  
Sales  
020 8995 4321

Energy Rating: D. We aim to make our particulars both accurate and reliable. However they are not guaranteed; nor do they form part of an offer or contract. If you require clarification on any points then please contact us, especially if you're traveling some distance to view. Please note that appliances and heating systems have not been tested and therefore no warranties can be given as to their good working order.

 **RICS** | Regulated  
Estate Agent  
and Letting Agent

[dexters.co.uk](https://www.dexters.co.uk)