



Watchfield Court, W4

£484 Per week

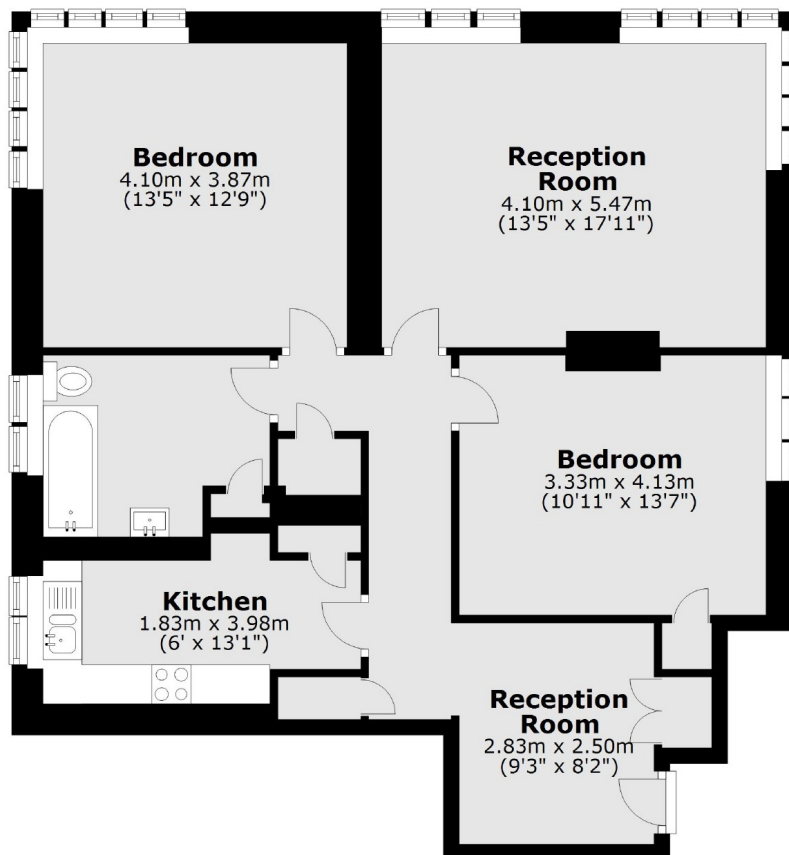
A refurbished two double bedroom apartment in this popular purpose-built mansion block in central Chiswick. The property has wood flooring throughout, unallocated parking and the rental price includes central heating and hot water.

Sutton Court Road is located moments from the bars, pubs and restaurants along Chiswick High Road. Chiswick Park and Gunnersbury tube stations are half a mile away and Turnham Green is just under a mile away.

Features

- Two Bedrooms
- Mansion Block
- Excellent Location
- High Specification
- Hot Water & Heating
- Unallocated Parking

Watchfield Court, London, W4



Total area: approx. 88.7 sq. metres (954.5 sq. feet)