



Layton Road, TW8

£375,000

A well-presented one bedroom apartment with period features throughout and well-proportioned rooms. The property has a large reception with bay windows, a kitchen/diner and a garden with a working shed that could be used as a home office.

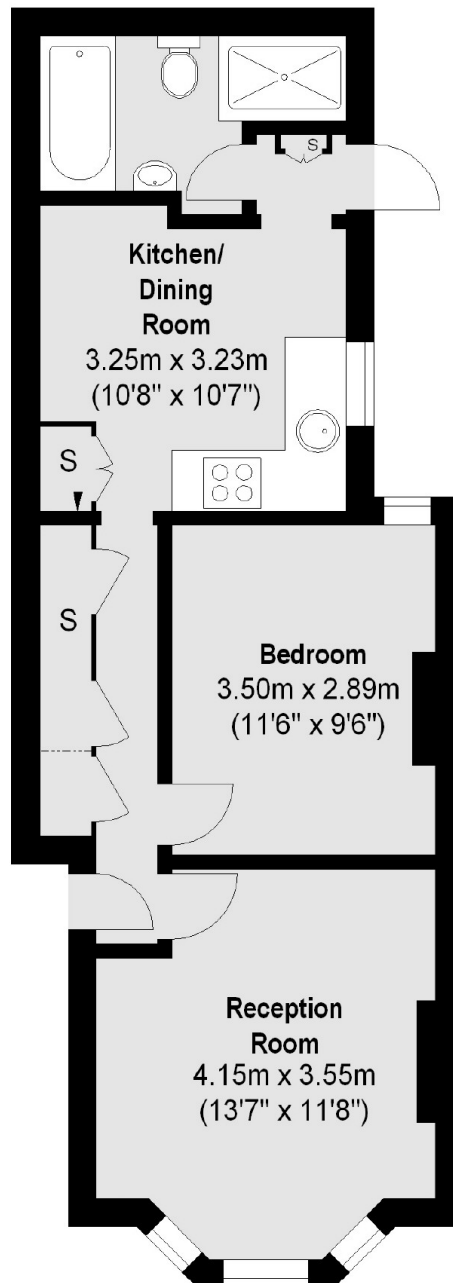
Layton Road is located within half a mile from Brentford station, which has services to London Waterloo and Brentford High Street, you are also within a mile of South Ealing underground. The area also has easy access to the M4 and various bus links and amenities.

Features

- Period Features
- Private Garden
- Excellent Condition
- Close To Transport
- Close To The River
- Well-Proportioned

Layton Road,
Brentford, TW8

Ground Floor



Total area (approx.): 45.81 sq. m (493.11sq. ft)

Dexters

Chiswick
388 Chiswick High Road
London
W4 5TF
Sales
020 8995 4321

Energy Rating: C. We aim to make our particulars both accurate and reliable. However they are not guaranteed; nor do they form part of an offer or contract. If you require clarification on any points then please contact us, especially if you're traveling some distance to view. Please note that appliances and heating systems have not been tested and therefore no warranties can be given as to their good working order.

 **RICS** | Regulated
Estate Agent
and Letting Agent

dexters.co.uk