

Chiswick High Road, W4

£761 Per week

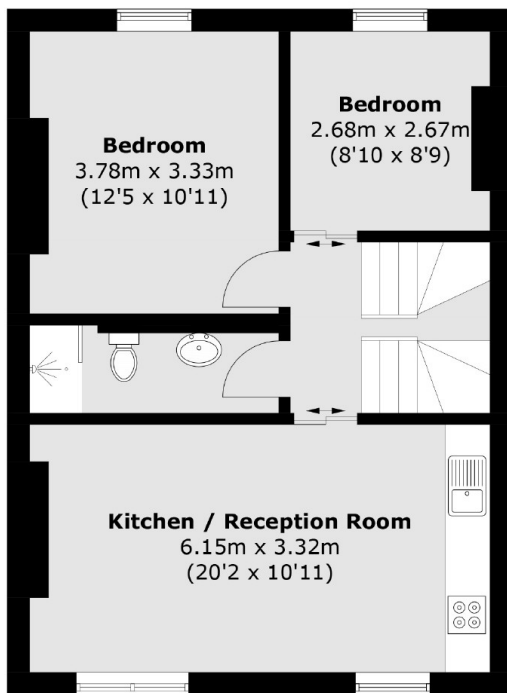
An excellently refurbished three bedroom period build maisonette. The property offers a large open plan kitchen/living area on the first floor of the property along with two bedrooms and a bathroom. Leading up a stunning feature staircase, the second floor offers a master bedroom en-suite.

Located on Chiswick High Road within half a mile of both Gunnersbury underground and Kew Bridge stations offering excellent access into London. The property is also close to the pubs, restaurants and cafés along Chiswick High Road.

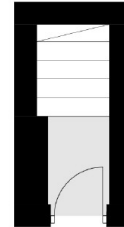
Features

Period Maisonette
Excellent Condition
Three Bedrooms
Two Bathrooms
Close To Transport
Split Level

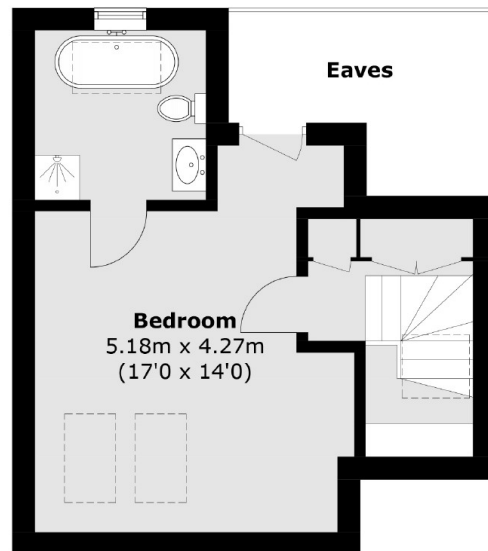
Chiswick High Road,
London, W4



First Floor



Ground Floor



Second Floor

Total area (approx.): 85.7 sq. m (922.4 sq. ft)
(Excluding Eaves)