



## Chiswick High Road, W4

£553 Per week

A recently refurbished, fifth floor apartment in this popular development with two double bedroom and a large open plan living room and kitchen. The property also has a lift, is eligible for a residents parking permit and has lots of storage.

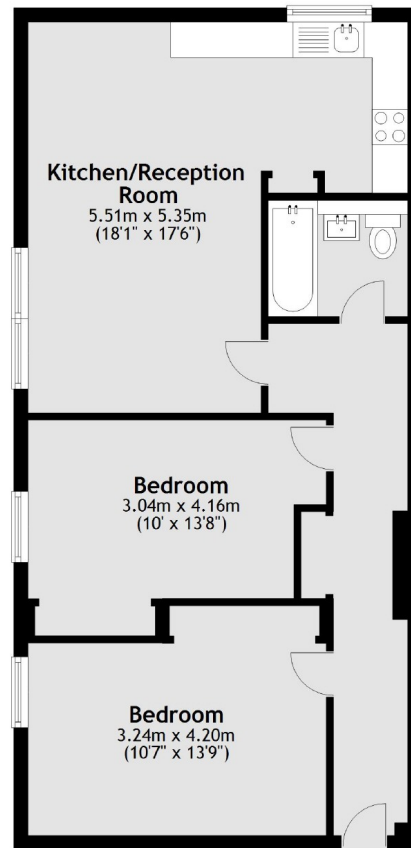
Mortlake House is perfectly located moments from Chiswick Business Park and Gunnersbury Underground as well as Chiswick Park Underground. There is also an array of popular restaurants, bars and coffee shops along with Turnham Green less than 1/4 of a mile away.

### Features

- Two Double Bedrooms
- Residents Parking Permit Option
- Recently Refurbished
- Lift access
- Lots of Storage
- Moments From Underground

Chiswick High Road,  
London, W4

Third Floor



Total area: approx. 61.1 sq. metres (658.2 sq. feet)

**Dexters**

Chiswick  
388 Chiswick High Road  
London  
W4 5TF  
Lettings  
020 8995 5439

Energy Rating: D. We aim to make our particulars both accurate and reliable. However they are not guaranteed; nor do they form part of an offer or contract. If you require clarification on any points then please contact us, especially if you're traveling some distance to view. Please note that appliances and heating systems have not been tested and therefore no warranties can be given as to their good working order.

 **RICS** | Regulated  
Estate Agent  
and Letting Agent

[dexters.co.uk](https://www.dexters.co.uk)